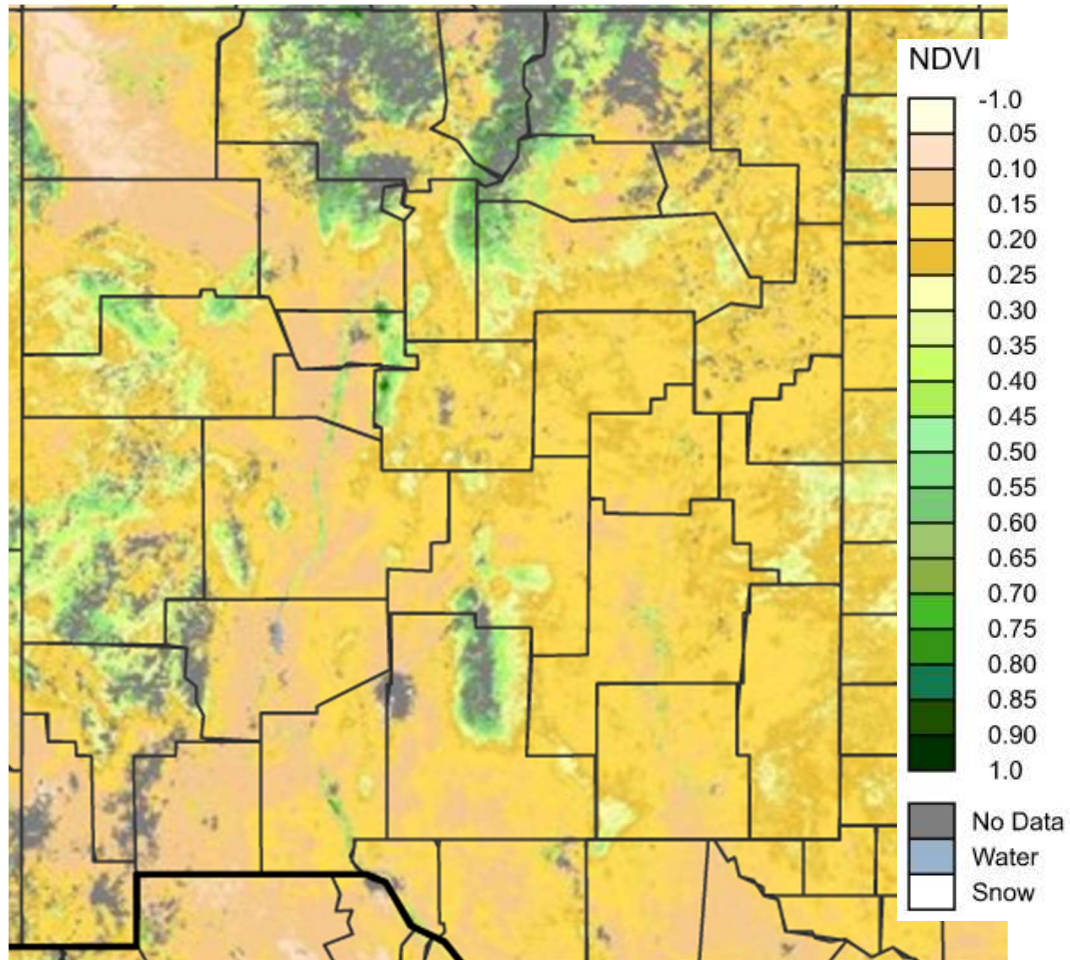


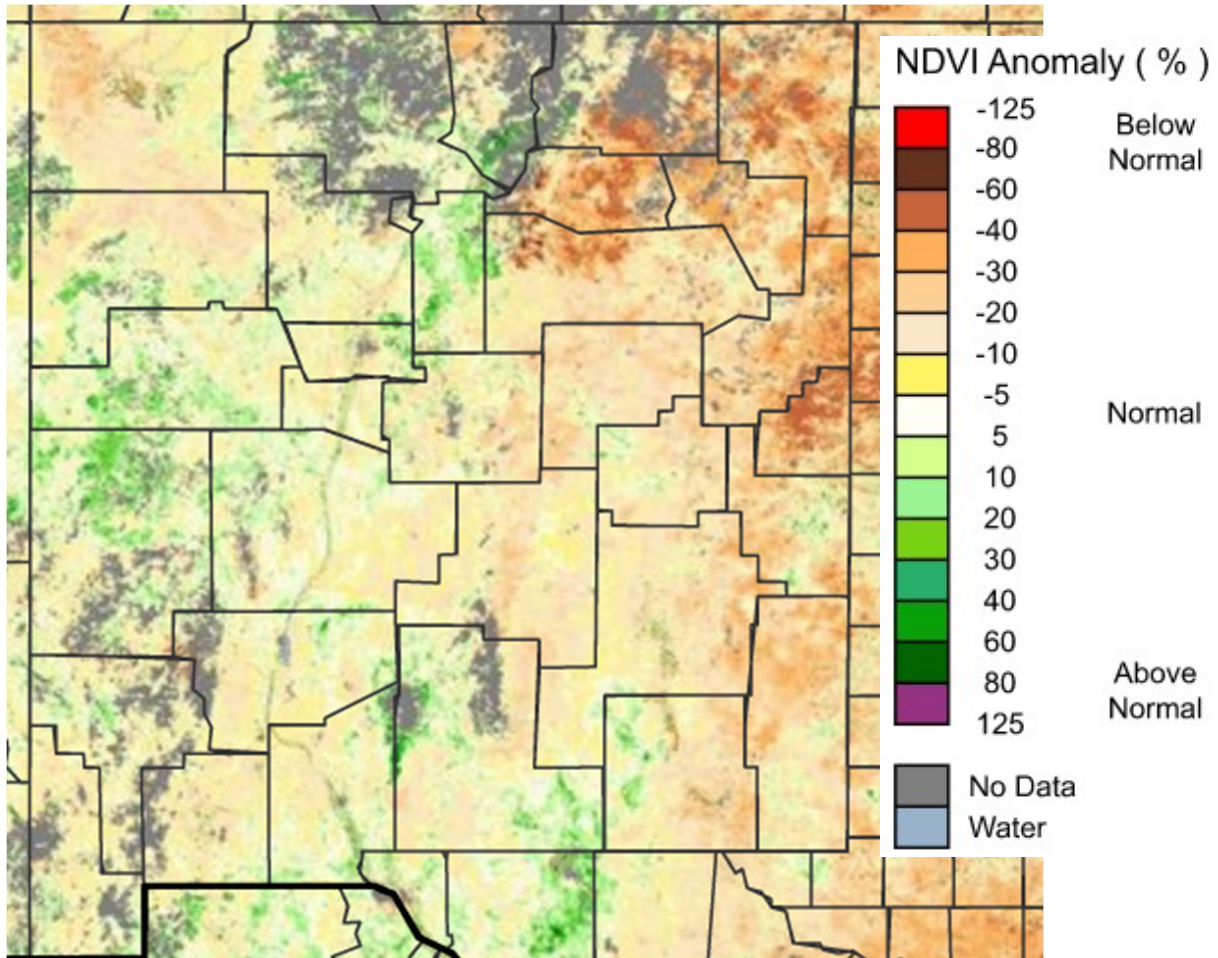
From <https://glam1.gsfc.nasa.gov/>; retrieved
27 June 2022 and shared by
New Mexico Department of Agriculture

Terra MODIS 8-day Normalized Difference Vegetation Index (NDVI)
June 18-June 25, 2022



NDVI is used to quantify **vegetation greenness** and is useful in understanding **vegetation density** and assessing **changes in plant health**.

Terra MODIS 8-day Normalized Difference Vegetation Index (NDVI) Anomaly %
June 18-June 25, 2022



An NDVI anomaly is the ***difference between the average NDVI for a particular month of a given year and the average NDVI for the same month over a specified number of years.***