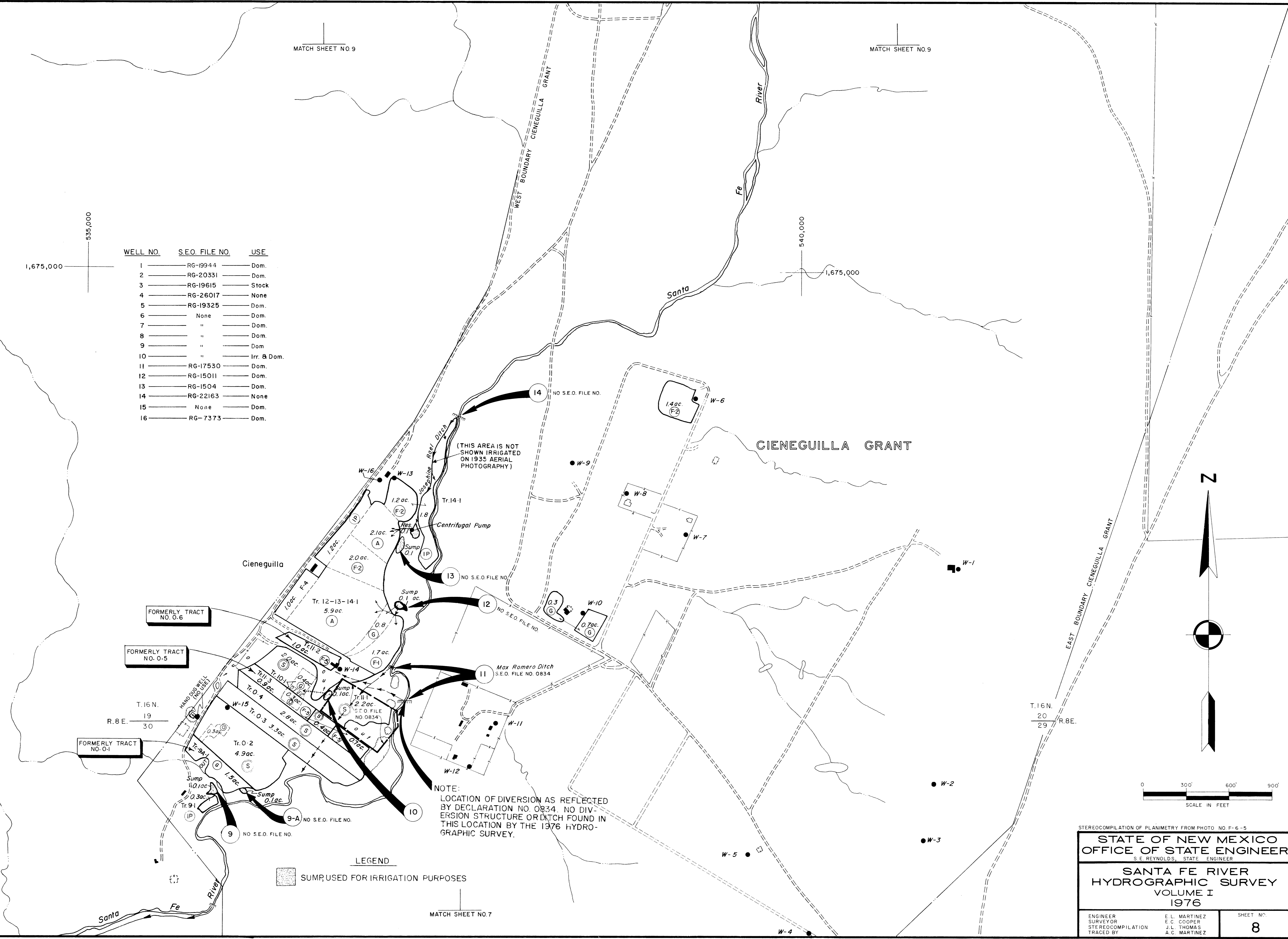


535,000  
1,675,000

540,000  
1,675,000

WELL NO.	S.E.O. FILE NO.	USE
1	RG-19944	Dom.
2	RG-20331	Dom.
3	RG-19615	Stock
4	RG-26017	None
5	RG-19325	Dom.
6	None	Dom.
7	"	Dom.
8	"	Dom.
9	"	Dom.
10	"	Irr. & Dom.
11	RG-17530	Dom.
12	RG-15011	Dom.
13	RG-1504	Dom.
14	RG-22163	None
15	None	Dom.
16	RG-7373	Dom.

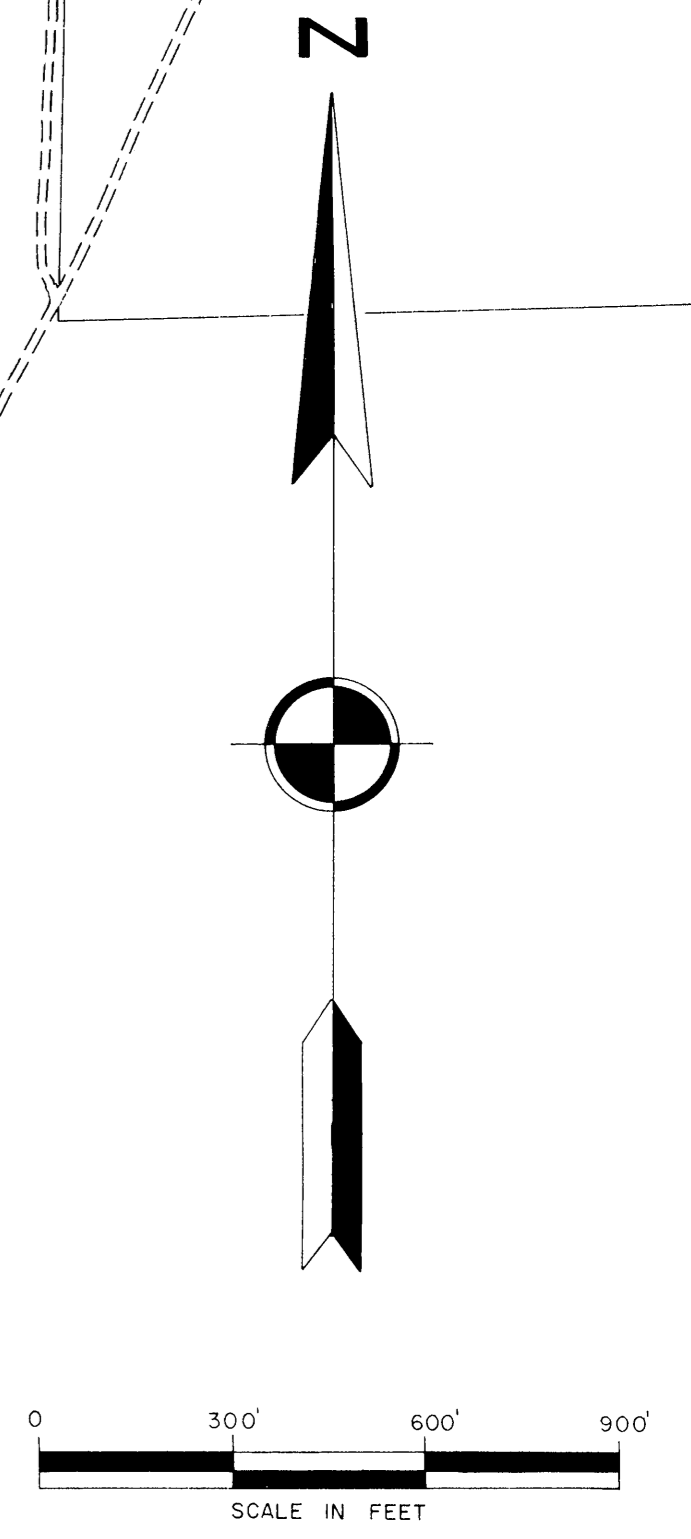


(THIS AREA IS NOT SHOWN IRRIGATED ON 1935 AERIAL PHOTOGRAPHY)

NOTE:  
LOCATION OF DIVERSION AS REFLECTED BY DECLARATION NO. 0834. NO DIVERSION STRUCTURE OR DITCH FOUND IN THIS LOCATION BY THE 1976 HYDROGRAPHIC SURVEY.

LEGEND  

 SUMP USED FOR IRRIGATION PURPOSES



STEREOCOPIATION OF PLANIMETRY FROM PHOTO. NO. F-6-5

**STATE OF NEW MEXICO**  
**OFFICE OF STATE ENGINEER**  
 S. E. REYNOLDS, STATE ENGINEER

**SANTA FE RIVER**  
**HYDROGRAPHIC SURVEY**  
 VOLUME I  
 1976

ENGINEER SURVEYOR STEREOCOPIATION TRACED BY	E. L. MARTINEZ E. C. COOPER J. L. THOMAS A. C. MARTINEZ	SHEET NO. <b>8</b>
---	--	-----------------------

MATCH SHEET NO. 7

MATCH SHEET NO. 7

MATCH SHEET NO. 9

MATCH SHEET NO. 9