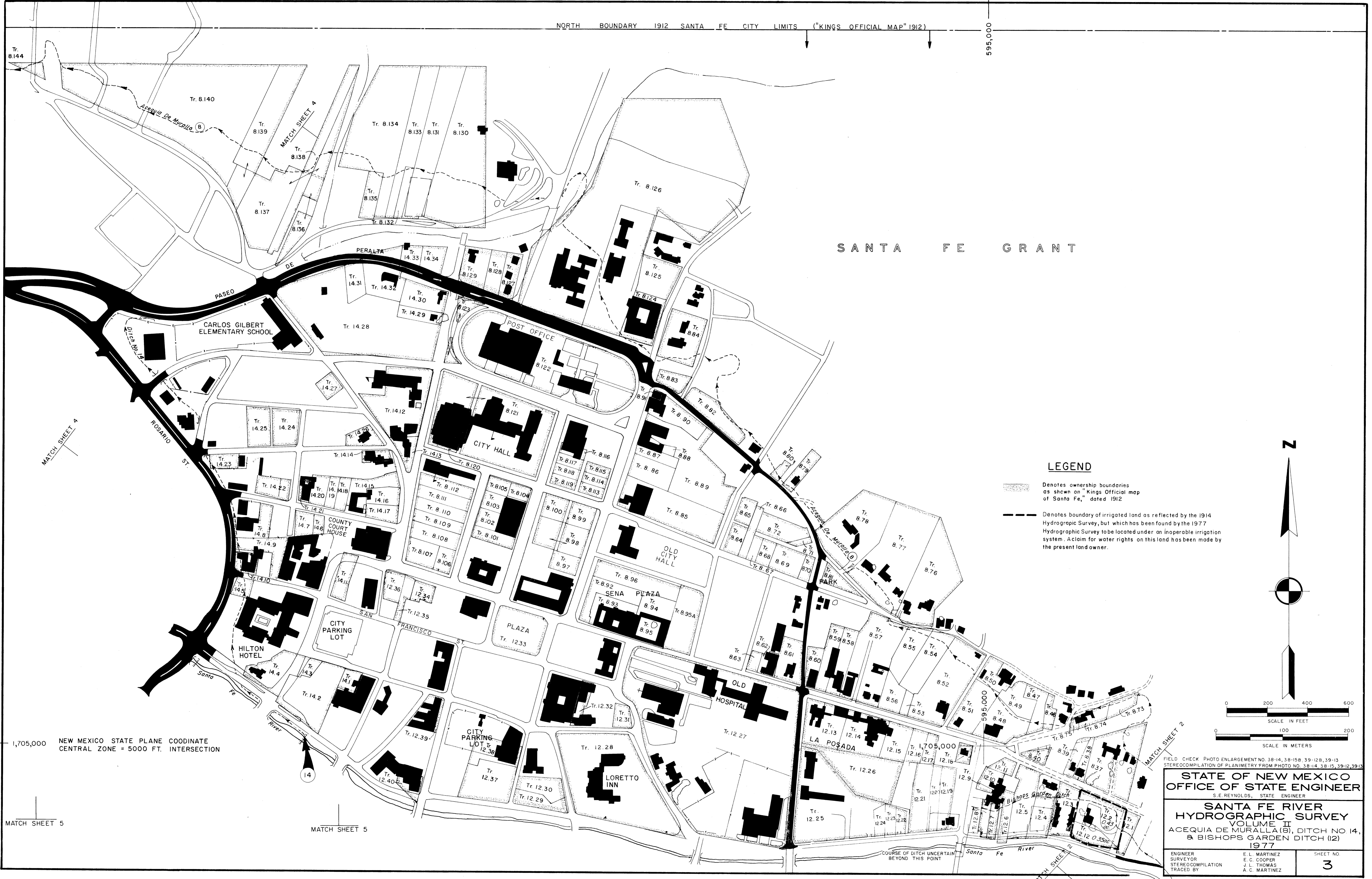


NORTH BOUNDARY 1912 SANTA FE CITY LIMITS ("KING'S OFFICIAL MAP" 1912)

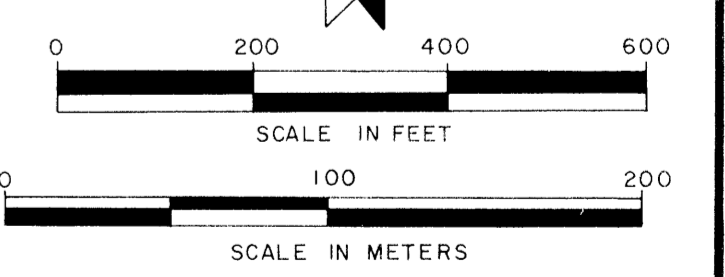
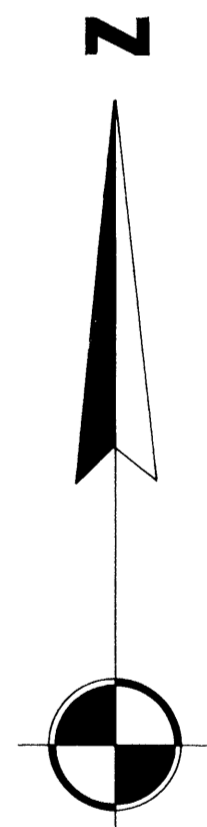
595,000



SANTA FE GRANT

LEGEND

- Denotes ownership boundaries as shown on "Kings Official map of Santa Fe," dated 1912
- Denotes boundary of irrigated land as reflected by the 1914 Hydrographic Survey, but which has been found by the 1977 Hydrographic Survey to be located under an inoperable irrigation system. A claim for water rights on this land has been made by the present land owner.



1,705,000 NEW MEXICO STATE PLANE COORDINATE CENTRAL ZONE = 5000 FT. INTERSECTION

FIELD CHECK PHOTO ENLARGEMENT NO. 38-14, 38-15B, 39-12B, 39-13
 STEREOCOMPILATION OF PLANIMETRY FROM PHOTO NO. 38-14, 38-15, 39-12, 39-13

STATE OF NEW MEXICO
OFFICE OF STATE ENGINEER
 S. E. REYNOLDS, STATE ENGINEER

SANTA FE RIVER
HYDROGRAPHIC SURVEY
 VOLUME II
 ACEQUIA DE MURALLA (8), DITCH NO 14,
 & BISHOPS GARDEN DITCH (12)
 1977

ENGINEER SURVEYOR STEREOCOMPILATION TRACED BY
 E. L. MARTINEZ
 E. C. COOPER
 J. L. THOMAS
 A. C. MARTINEZ

SHEET NO.
3

MATCH SHEET 5

MATCH SHEET 5

12