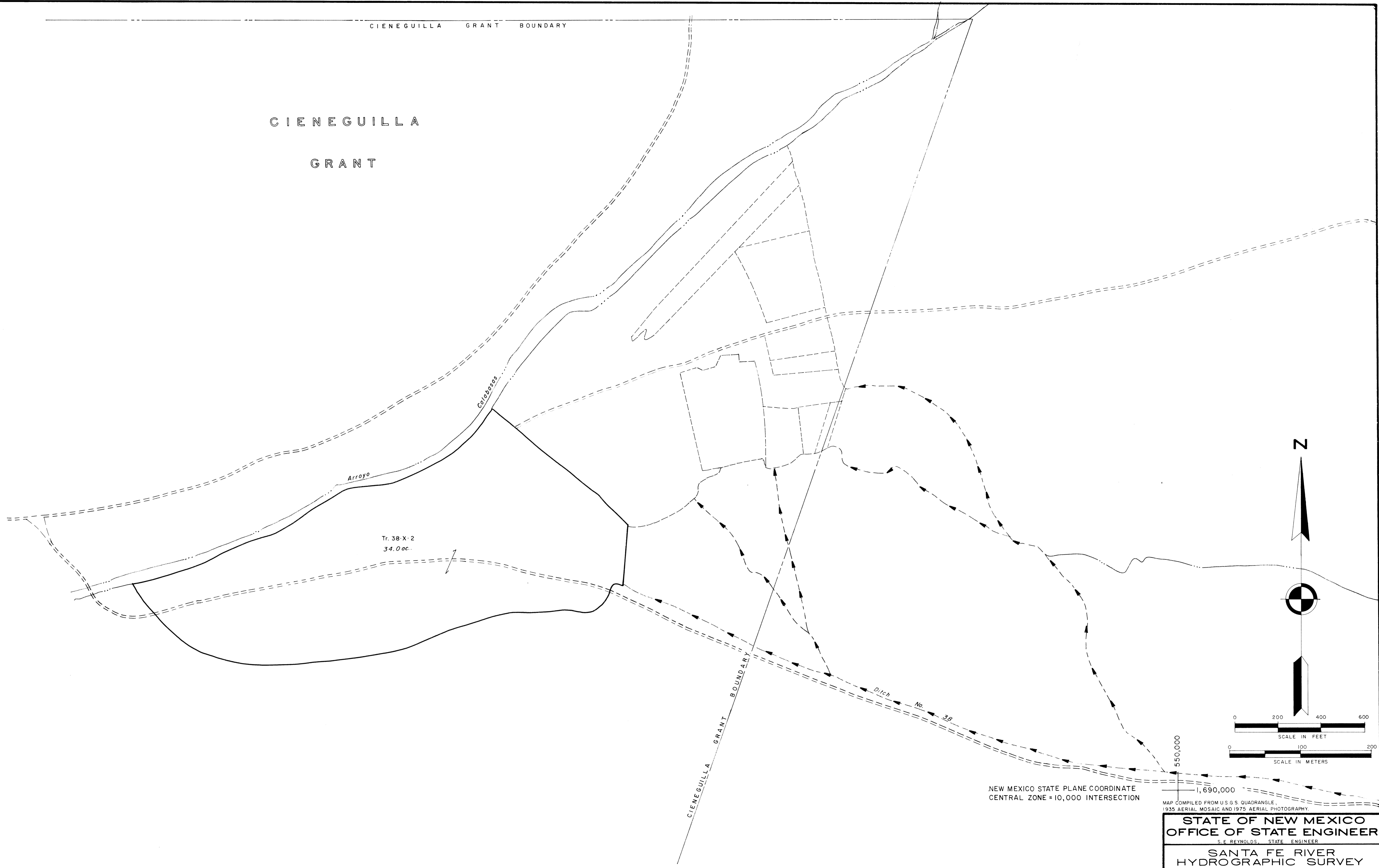


CIENEGUILLA GRANT BOUNDARY

CIENEGUILLA

GRANT



Tr. 38-X-2
34.0 ac.

Colobores

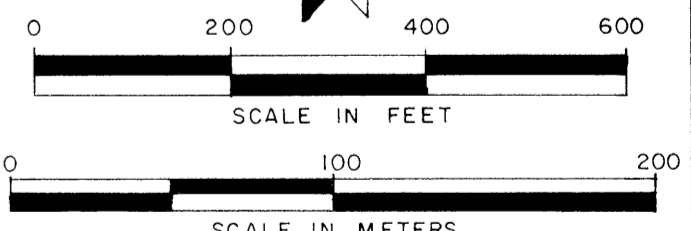
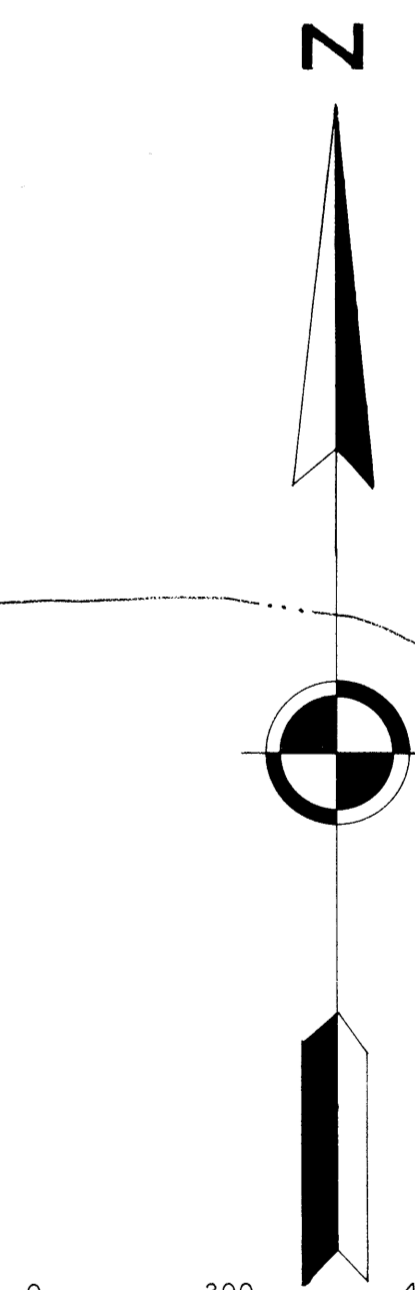
Arroyo

Ditch
No. 38

CIENEGUILLA GRANT BOUNDARY

NEW MEXICO STATE PLANE COORDINATE
CENTRAL ZONE = 10,000 INTERSECTION

550,000
1,690,000



MAP COMPILED FROM U.S.G.S. QUADRANGLE,
1935 AERIAL MOSAIC AND 1975 AERIAL PHOTOGRAPHY.

STATE OF NEW MEXICO
OFFICE OF STATE ENGINEER
 S. E. REYNOLDS, STATE ENGINEER

SANTA FE RIVER
HYDROGRAPHIC SURVEY
 VOLUME II

1977

ENGINEER SURVEYOR
 STEREO COMPILATION
 TRACED BY

E. L. MARTINEZ
 E. C. COOPER
 J. L. THOMAS
 G. F. CRAIG

SHEET NO.
14-A