

Airport Road

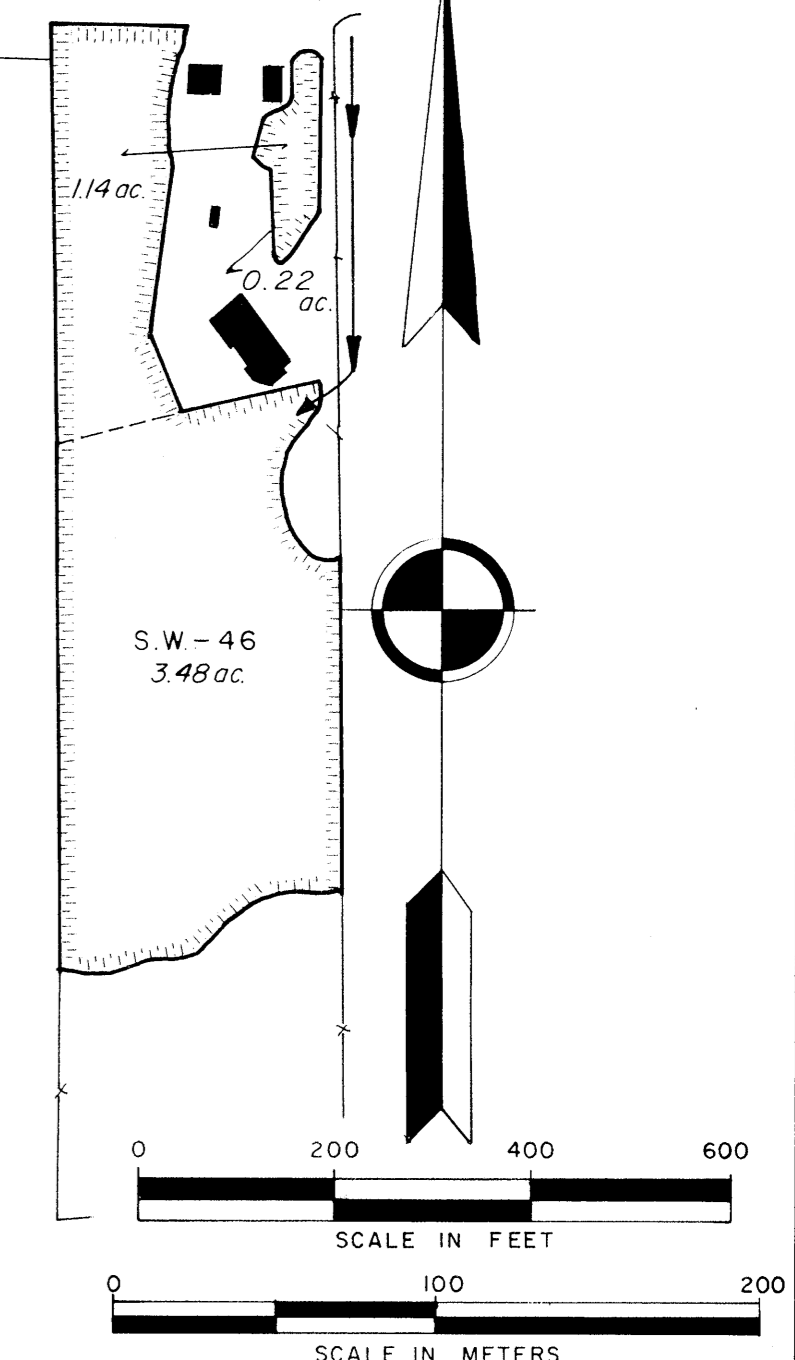
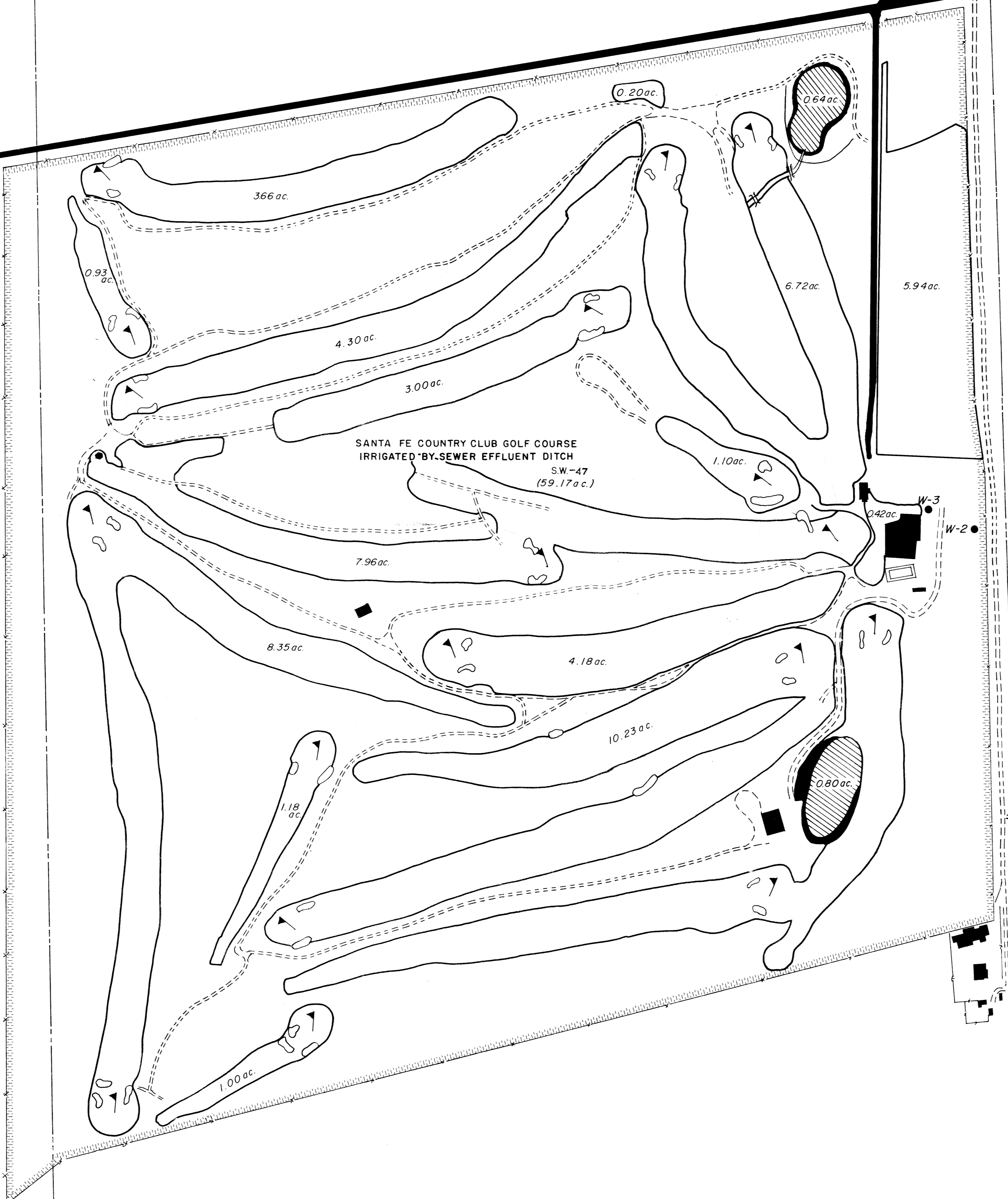
City of Santa Fe Sewer Effluent Ditch

555,000
1,685,000

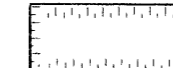
560,000
1,685,000

MATCH LINE SHEET NO. 30

WELL NO.	S.E.O. FILE NO.	USE
1	RG-24042	SUBDIVISION & RELATED PURPOSES
2	RG-20379	COUNTRY CLUB & GOLF COURSE (IRRIGATION & DOMESTIC)
3	RG-20379-S	COUNTRY CLUB & GOLF COURSE (IRRIGATION & DOMESTIC)



LEGEND

 Denotes Lands Irrigated By Sewer Effluent Ditch Only, and not classified as irrigated land by the 1914 Hydrographic Survey.

FIELD CHECK PHOTO ENLARGEMENT NO. 12-7, 13-7
STEREOCOMPILATION OF PLANIMETRY FROM PHOTO NO. 12-6, 12-7

STATE OF NEW MEXICO
OFFICE OF STATE ENGINEER
S. E. REYNOLDS, STATE ENGINEER

SANTA FE RIVER
HYDROGRAPHIC SURVEY
VOLUME II
SEWER DITCH
1977

ENGINEER SURVEYOR STEREO COMPILATION TRACED BY	E. L. MARTINEZ E. C. COOPER J. L. THOMAS G. F. CRAIG	SHEET NO. 31
---	---	------------------------

T.16N.
12 R.8E.
13
T.16N.