
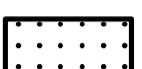
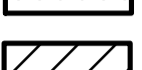
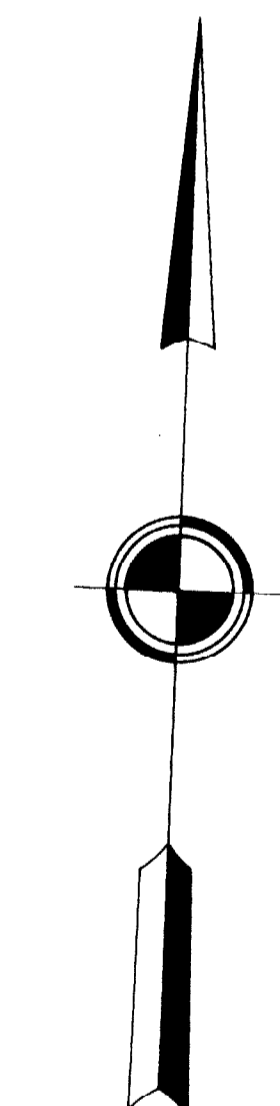
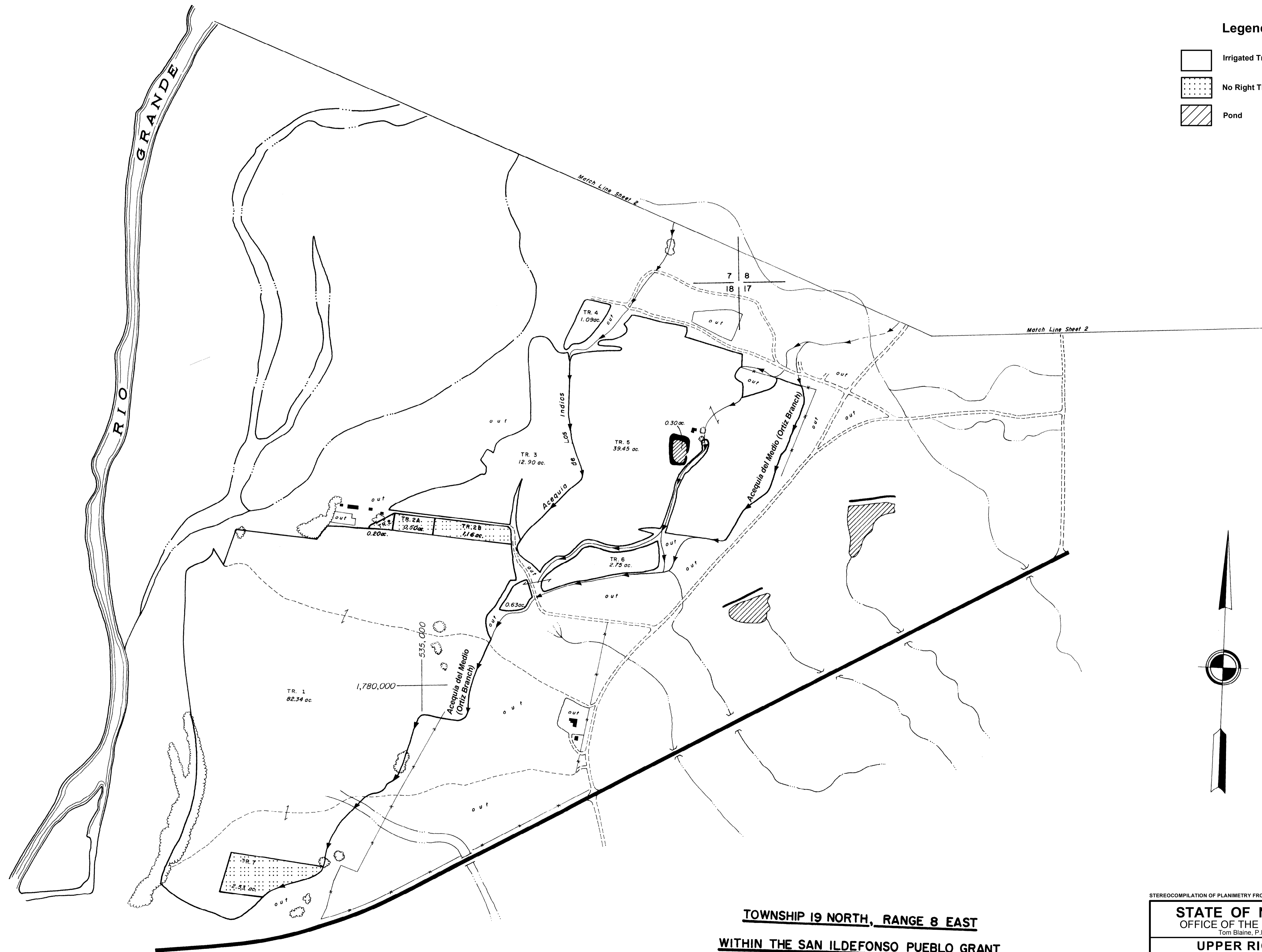
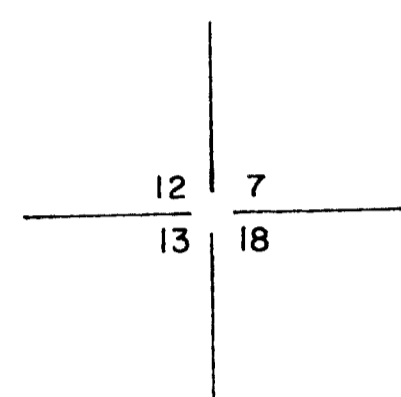


Legend

-  Irrigated Tract Boundary
-  No Right Tract Boundary
-  Pond



TOWNSHIP 19 NORTH, RANGE 8 EAST
WITHIN THE SAN ILDEFONSO PUEBLO GRANT

STEREOCOPIATION OF PLANIMETRY FROM PHOTOS 5 - 60, 5 - 59

STATE OF NEW MEXICO
 OFFICE OF THE STATE ENGINEER
 Tom Blaine, P.E., State Engineer

UPPER RIO GRANDE
HYDROGRAPHIC SURVEY
 NAMBE - POJOAQUE - TESUQUE 1964 - 2016
 Final Judgment and Decree

ENGINEER SURVEYOR STEREOCOPIATION TRACED BY APPROVED	F. R. ALLEN E. C. COOPER J. L. THOMAS M.H. BOYCE	SCALE 1" = 300' SHEET NO. 1
--	---	---------------------------------------