
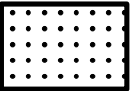

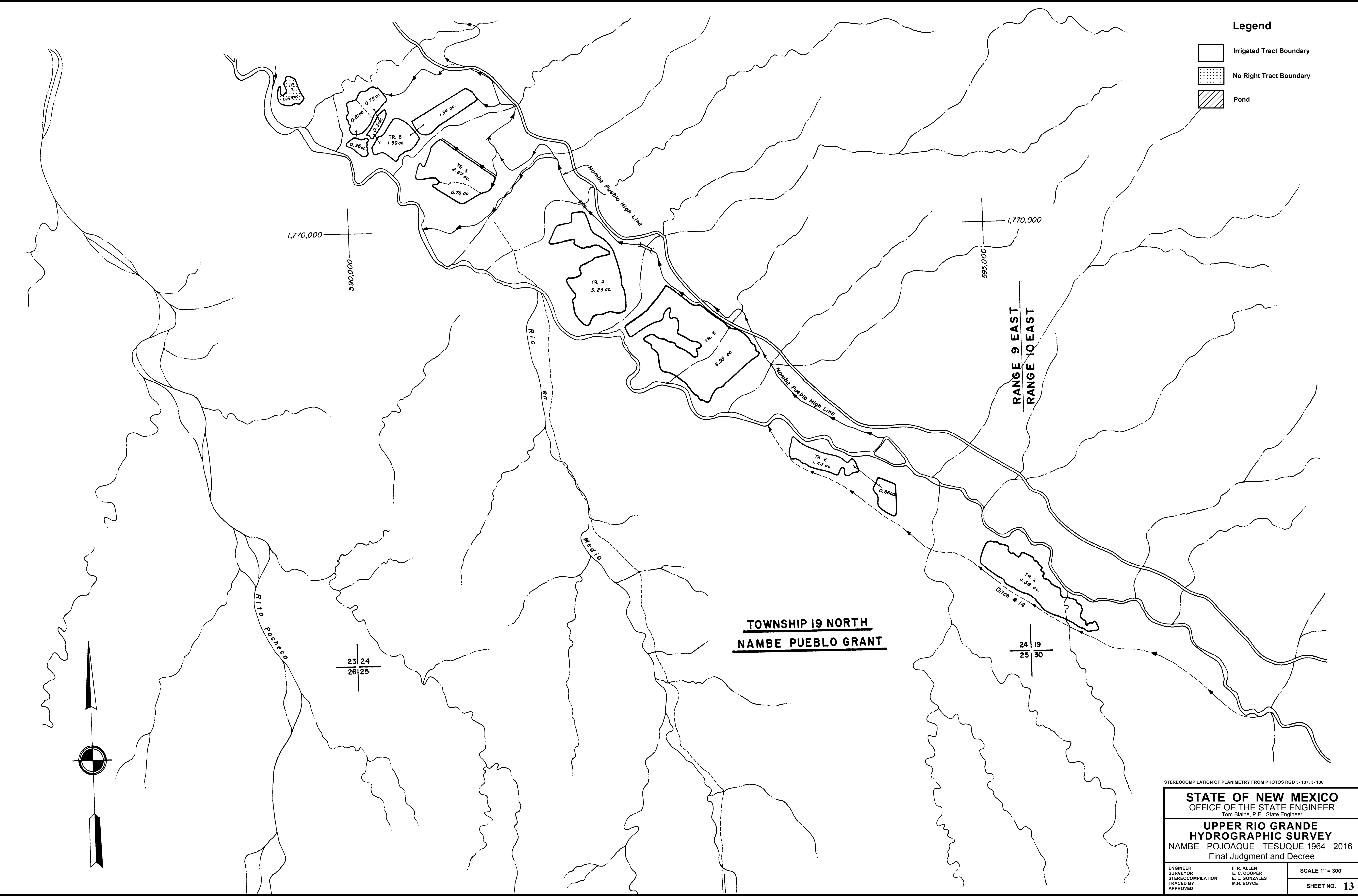


Legend

-  Irrigated Tract Boundary
-  No Right Tract Boundary
-  Pond



**TOWNSHIP 19 NORTH**  
**NAMBE PUEBLO GRANT**

**RANGE 9 EAST**  
**RANGE 10 EAST**

STEREOCOMPILATION OF PLANIMETRY FROM PHOTOS RGD 3-137, 3-138

<b>STATE OF NEW MEXICO</b> OFFICE OF THE STATE ENGINEER <small>Tom Blaine, P.E., State Engineer</small>		
<b>UPPER RIO GRANDE</b> <b>HYDROGRAPHIC SURVEY</b> NAMBE - POJOAQUE - TESUQUE 1964 - 2016 Final Judgment and Decree		
ENGINEER SURVEYOR STEREOCOMPILATION TRACED BY APPROVED	F. R. ALLEN E. G. COOPER E. L. GONZALES M.H. BOYCE	SCALE 1" = 300' SHEET NO. <b>13</b>