
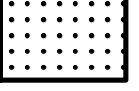

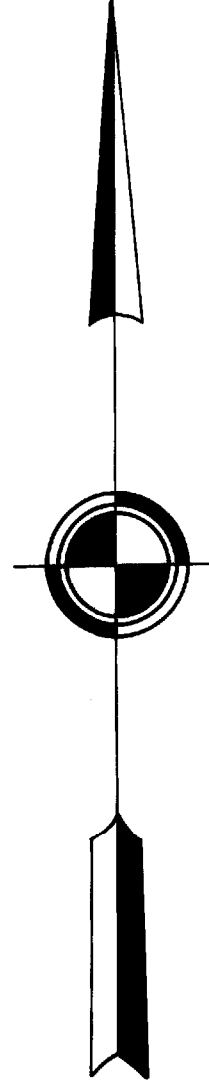
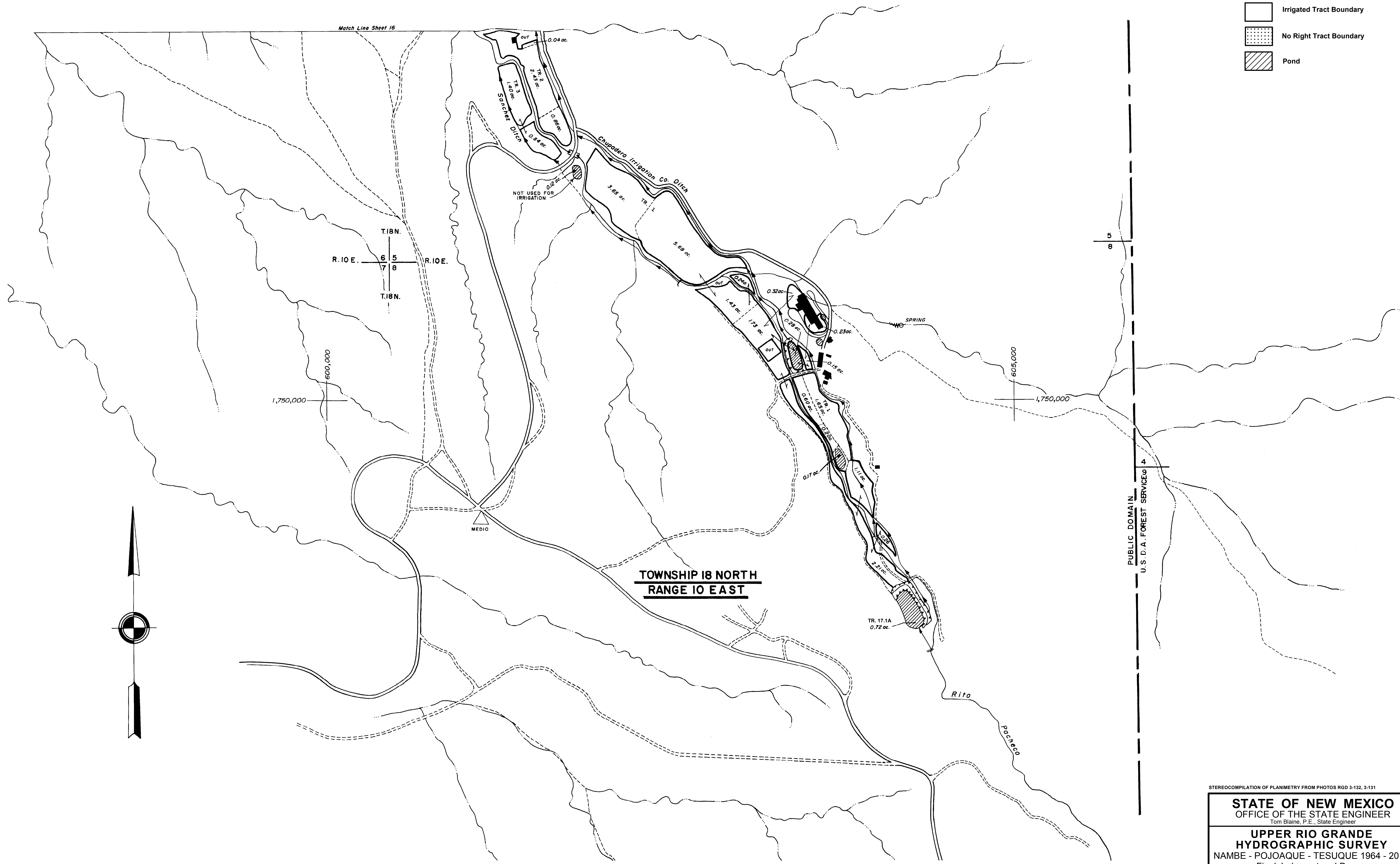


Legend

-  Irrigated Tract Boundary
-  No Right Tract Boundary
-  Pond



TOWNSHIP 18 NORTH
RANGE 10 EAST

PUBLIC DOMAIN
 U.S.D.A. FOREST SERVICE 4

STEREOCOMPILATION OF PLANIMETRY FROM PHOTOS RGD 3-132, 3-131

STATE OF NEW MEXICO
 OFFICE OF THE STATE ENGINEER
 Tom Blaine, P.E., State Engineer

UPPER RIO GRANDE
HYDROGRAPHIC SURVEY
 NAMBE - POJOAQUE - TESUQUE 1964 - 2017
 Final Judgment and Decree

ENGINEER SURVEYOR STEREOCOMPILATION TRACED BY APPROVED	F. R. ALLEN E. C. COOPER E. L. GONZALES M.H. BOYCE	SCALE 1" = 300' SHEET NO. 17
--	---	---------------------------------