

Year	1990	2000	2010	2020	2030	2040	2050	2060
CURRENT DEPLETIONS (1)								
Agricultural- Irrig. & Stock (rounded)	246	246	246	246	246	246	246	246
Navajo Irrigation:								
NIP	149.4	149.4	149.4	149.4	149.4	149.4	149.4	149.4
Fruitland-Cambridge	7.9	7.9	7.9	7.9	7.9	7.9	7.9	7.9
Hogback-Cudei	13.0	13.0	13.0	13.0	13.0	13.0	13.0	13.0
Chaco River	3.1	3.1	3.1	3.1	3.1	3.1	3.1	3.1
Crystal	0.3	0.3	0.3	0.3	0.3	0.3	0.3	0.3
Navajo Irrigation Subtotal	173.7	173.7	173.7	173.7	173.7	173.7	173.7	173.7
Non-Indian Irrigation:								
Above Navajo Dam (inc. Jicarilla)	1.3	1.3	1.3	1.3	1.7	1.7	1.7	1.7
Upper San Juan	8.2	8.2	8.2	8.2	8.2	8.2	8.2	8.2
Hammond	9.2	9.2	9.2	9.2	9.2	9.2	9.2	9.2
Animas	31.7	31.7	31.7	31.7	31.7	31.7	31.7	31.7
La Plata	5.1	5.1	5.1	5.1	5.1	5.1	5.1	5.1
Farmers Mutual Ditch	8.7	8.7	8.7	8.7	8.7	8.7	8.7	8.7
Westwater	0.1	0.1	0.1	0.1	0.1	0.1	0.1	0.1
Jewell Valley	2.8	2.8	2.8	2.8	2.8	2.8	2.8	2.8
Chaco River	0.7	0.7	0.7	0.7	0.7	0.7	0.7	0.7
Non-Indian Irrigation Subtotal	67.8	67.8	67.8	67.8	68.2	68.2	68.2	68.2
Stockpond Evap and Stock	4.3	4.3	4.3	4.3	4.3	4.3	4.3	4.3
Ag- Irrig. & Stock Total	245.8	245.8	245.8	245.8	246.2	246.2	246.2	246.2
Municipal/Domestic (rounded)								
Municipal and industrial	8.9	8.9	8.9	8.9	8.9	8.9	8.9	8.9
Scattered Rural Dom. (inc. Jicarilla)	1.4	1.4	1.4	1.4	1.5	1.5	1.6	1.6
Municipal/Domestic Total	10.3	10.3	10.3	10.3	10.4	10.4	10.5	10.5
Power/Industrial (rounded)								
PNM - Navajo Reservoir supply (2)	16.2	16.2	16.2	16.2	16.2	16.2	16.2	16.2
Ulah International, inc. lease to PNM	37.0	37.0	37.0	38.0	39.0	39.0	39.0	39.0
Bloomfield Industrial	2.5	2.5	2.5	2.5	2.5	2.5	2.5	2.5
Power/Industrial Total	55.7	55.7	55.7	56.7	57.7	57.7	57.7	57.7
Minerals	0	0	0	0	0	0	0	0
Export - San Juan-Chama Project	108	108	108	108	108	108	108	108
Reservoir Evaporation (rounded)								
Navajo Reservoir Evap	28.3	28.3	27.5	27.0	27.0	27.0	27.0	27.0
Small Reservoir Evap	1.2	1.2	1.2	1.2	1.2	1.2	1.2	1.2
Reservoir Evaporation Total	29.5	29.5	28.7	28.2	28.2	28.2	28.2	28.2
TOTAL CURRENT DEPLETIONS	449	449	449	449	450	450	450	450
ANTICIPATED DEPLETIONS								
Agricultural- Irrig. & Stock (rounded)	0	0	90	112	112	112	112	112
NIP Completion (3)	0.0	0.0	90.0	104.6	104.6	104.6	104.6	104.6
Fruitland/Hogback Rehabilitation	0.0	0.0	0.0	7.0	7.0	7.0	7.0	7.0
Ag- Irrig. & Stock Total	0.0	0.0	90.0	111.6	111.6	111.6	111.6	111.6
Municipal/Domestic (rounded)								
Animas-La Plata:								
SJWC (4)	0.0	1.0	10.4	10.4	10.4	10.4	10.4	10.4
Navajo	0.0	0.0	0.0	2.0	2.3	2.3	2.3	2.3
LPCD	0.0	0.0	0.0	0.8	0.8	0.8	0.8	0.8
Ridges Basin Reservoir Evap	0.0	0.0	0.0	0.1	0.1	0.1	0.1	0.1
Animas-La Plata Subtotal	0.0	1.0	10.4	13.3	13.6	13.6	13.6	13.6
Jicarilla (5)	0.0	0.0	0.0	0.8	1.4	1.8	1.8	1.8
Municipal/Domestic Subtotal	0.0	1.0	10.4	14.1	15.0	15.4	15.4	15.4
Power/Industrial (Jicarilla)	0	0	0	0	0	0	0	0
Minerals	0	0	0	0	0	0	0	0
Export	0	0	0	0	0	0	0	0
Reservoir Evaporation	0	0	0	0	0	0	0	0
TOTAL ANTICIPATED DEPLETIONS	449	450	549	575	577	577	577	577
POTENTIAL DEPLETIONS								
Agricultural- Irrig. & Stock	0	0	0	0	0	0	0	0
Municipal/Domestic (NGP- Navajo)	0	0	0	6	10	11	11	11
Municipal/Domestic (Navajo)	0	0	0	1	2	3	4	5
Power/Industrial (rounded)	0	0	0	1	1	1	1	1
Navajo/Gallup - NAP1	0.0	0.0	0.0	0.7	0.7	0.7	0.7	0.7
Small Navajo Res. Contracts	0.0	0.0	0.1	0.1	0.1	0.1	0.1	0.1
Power/Industrial Subtotal	0.0	0.0	0.1	0.8	0.8	0.8	0.8	0.8
Minerals	0	0	0	0	0	0	0	0
Export - Navajo/Gallup (rounded)	0	0	0	6	9	14	14	14
Gallup (lease from Jicarilla)	0.0	0.0	0.0	3.5	5.0	7.5	7.5	7.5
Navajo in NM	0.0	0.0	0.0	2.0	4.0	6.1	6.1	6.1+2
Export Subtotal	0.0	0.0	0.0	5.5	9.0	13.6	13.6	13.6
Reservoir Evaporation	0	0	0	0	0	0	0	0
TOTAL POTENTIAL DEPLETIONS	0	0	0	14	22	29	30	31
Summary of Depletions	449	450	549	589	599	606	607	608
Evap- CRSP Storage Units	58	58	58	58	58	58	58	58
TOTAL DEPLETIONS	507	508	607	647	657	664	665	666
State Share of 6.0 MAF (6)	669	669	669	669	669	669	669	669
Remaining Available (6,7)	162	161	62	22	12	5	4	3
Percent of State Share	24%	24%	9%	3%	2%	1%	1%	0%

ag. antic. not rights

Short Explanation memo? to show from Saffle Co

*NGP - 2 redist
ship - 1 x
gw - 2 - 1*

Jic. irrig. to export not used by irrigation

(1) Does not reflect post-1965 transfers from irrigation to municipal and industrial uses. 800 a-f of current non-indian depletions supplied through short-term leases from Jicarilla as of 2001.
 (2) PNM contract with Secretary expires 2005; PNM subcontract with Jicarilla effective 2006-2027, with commitment to negotiate in 2022 for a subcontract extension.
 (3) Total NIP depletion by 2020 is 254,000 a-f, assuming 5% average fallow acreage.
 (4) SJWC member entities in 2000 used direct flow of Animas River under ALP permits.
 (5) Jicarilla may use 1,200 a-f through Navajo/Gallup Project on south part of reservation.
 (6) Does not include salvage by use.
 (7) Reserved for settlements.

minor adjustments

Amended Print Log: Document #:



CONFIDENTIAL

Upper Colorado River Division States Depletion Schedule (New Mexico)

Item	Year							
	1991-95	2000	2010	2020	2030	2040	2050	2060+
CURRENT DEPLETIONS								
Agricultural-Irrig. & Stock	246	246	246	246	246	246	246	246
Municipal/Domestic	10	10	10	10	10	10	10	10
Power/Industrial	58	58	56	57	58	58	58	58
Minerals	0	0	0	0	0	0	0	0
Export	108	108	108	108	108	108	108	108
Reservoir Evaporation	29	29	29	28	28	28	28	28
TOTAL CURRENT DEPLETIONS	449	449	449	449	450	450	450	450
ANTICIPATED DEPLETIONS								
Agricultural-Irrig. & Stock	0	0	90	112	112	112	112	112
Municipal/Domestic	0	1	10	14	15	15	15	15
Power/Industrial	0	0	0	0	0	0	0	0
Minerals	0	0	0	0	0	0	0	0
Export	0	0	0	0	0	0	0	0
Reservoir Evaporation	0	0	0	0	0	0	0	0
TOTAL ANTICIPATED DEPLETIONS	0	1	100	126	127	127	127	127
POTENTIAL DEPLETIONS								
Agricultural-Irrig. & Stock	0	0	0	0	0	0	0	0
Municipal/Domestic	0	0	0	7	12	14	15	16
Power/Industrial	0	0	1	1	1	1	1	1
Minerals	0	0	0	0	0	0	0	0
Export	0	0	0	6	9	14	14	14
Reservoir Evaporation	0	0	0	0	0	0	0	0
TOTAL POTENTIAL DEPLETIONS	0	0	1	14	22	29	30	31
Summary of Depletions								
Evap-Storage Units	449	450	550	589	599	606	607	608
Evap-Storage Units	58	58	58	58	58	58	58	58
TOTAL DEPLETIONS	507	508	608	647	657	664	665	666
State Share of 6.0 MAF	669	669	669	669	669	669	669	669
Remaining Available	162	161	61	22	12	5	4	3
Percent of State Share	24%	24%	9%	3%	2%	1%	1%	0%

NOTE: This depletion schedule does not attempt to interpret the Colorado River Compact, the Upper Colorado River Basin Compact, or any other element of the "Law of the River." This schedule should not be construed as an acceptance of any assumption that limits the Upper Colorado River Basin's depletion.

In this schedule, the Upper Division Allocation is listed, for planning purposes only, as 5,950,000 acre-feet. For planning purposes, the total Upper Colorado River Basin Allocation is 6,000,000 acre-feet, of which 50,000 acre-feet is the Upper Basin allocation to Arizona. This estimate does not constitute an endorsement of the Bureau of Reclamation's 1988 Hydrologic Determination.

Evap-Storage Units refers to the ^(N/A) total and individual States' portions of evaporation from the major reservoirs constructed under the Colorado River Storage Project Act. These include Flaming Gorge, Curecanti and Glen Canyon.

- copy to prev. page

*Amended Privilege Log
Document # 34*

San Juan River Basin in New Mexico Navajo Nation Water Rights Settlement

Use 2060	TAF	% share	
Navajo Nation	316	51.7	
Navajo Reservoir Evap	28	4.6	
Non-Indian: benefits reservation	39	6.4	62.7
Jicarilla Apache Nation	33	5.4	5.4
Non-Indian: out of basin	102	16.7	
Non-Indian: in basin	93	15.2	31.9
Total	611	100.0	

*Amended Plein's
Log
Document # 34*



CONFIDENTIAL

Oct. 27, 2005 - Confidential Draft
October 2003

Year	1990	2000	2010	2020	2030	2040	2050	2060	Navajo	Jic	Other
CURRENT DEPLETIONS (1)											
Agricultural- Irrig. & Stock (rounded)	246	246	246	246	246	246	246	246			
Navajo Irrigation:											
NIIP	149.4	149.4	149.4	149.4	149.4	149.4	149.4	149.4			
Fruiland-Cambridge	7.9	7.9	7.9	7.9	7.9	7.9	7.9	7.9			
Hogback-Cudei	13.0	13.0	13.0	13.0	13.0	13.0	13.0	13.0			
Chaco River	3.1	3.1	3.1	3.1	3.1	3.1	3.1	3.1			
Crystal	0.3	0.3	0.3	0.3	0.3	0.3	0.3	0.3			
Navajo Irrigation Subtotal	173.7	173.7	173.7	173.7	173.7	173.7	173.7	173.7	174		
Non-Indian Irrigation:											
Above Navajo Dam (inc. Jicarilla)	1.3	1.3	1.3	1.3	1.7	1.7	1.7	1.7			
Upper San Juan	8.2	8.2	8.2	8.2	8.2	8.2	8.2	8.2			
Hammond	9.2	9.2	9.2	9.2	9.2	9.2	9.2	9.2			
Animas	31.7	31.7	31.7	31.7	31.7	31.7	31.7	31.7			
La Plata	5.1	5.1	5.1	5.1	5.1	5.1	5.1	5.1			
Farmers Mutual Ditch	8.7	8.7	8.7	8.7	8.7	8.7	8.7	8.7			
Westwater	0.1	0.1	0.1	0.1	0.1	0.1	0.1	0.1			
Jewett Valley	2.8	2.8	2.8	2.8	2.8	2.8	2.8	2.8			
Chaco River	0.7	0.7	0.7	0.7	0.7	0.7	0.7	0.7			
Non-Indian Irrigation Subtotal	67.8	67.8	67.8	67.8	68.2	68.2	68.2	68.2		1	67
Stockpond Evap and Stock	4.3	4.3	4.3	4.3	4.3	4.3	4.3	4.3	3		1
Ag. Irrig. & Stock Total	245.8	245.8	245.8	245.8	246.2	246.2	246.2	246.2			
Municipal/Domestic (rounded)											
Municipal and Industrial	8.9	8.9	8.9	8.9	8.9	8.9	8.9	8.9			
Scattered Rural Dom. (inc. Jicarilla)	1.4	1.4	1.4	1.4	1.5	1.5	1.5	1.6	1		8
Municipal/Domestic Total	10.3	10.3	10.3	10.3	10.4	10.4	10.5	10.5			1
Power/Industrial (rounded)											
PNM - Navajo Reservoir supply (2)	16.2	16.2	16.2	16.2	16.2	16.2	16.2	16.2		16	
Utah International, inc. lease to PNM	37.0	37.0	37.0	37.0	39.0	39.0	39.0	39.0			3
Bloomfield Industrial	2.5	2.5	2.5	2.5	2.5	2.5	2.5	2.5			3
Power/Industrial Total	55.7	55.7	55.7	56.7	57.7	57.7	57.7	57.7			3
Minerals	0	0	0	0	0	0	0	0			
Export - San Juan-Chama Project	108	108	108	108	108	108	108	108			
Reservoir Evaporation (rounded)	29	29	29	28	28	28	28	28	28		
Navajo Reservoir Evap	28.3	28.3	27.5	27.0	27.0	27.0	27.0	27.0			
Small Reservoir Evap	1.2	1.2	1.2	1.2	1.2	1.2	1.2	1.2			
Reservoir Evaporation Total	29.5	29.5	28.7	28.2	28.2	28.2	28.2	28.2			
TOTAL CURRENT DEPLETIONS	449	449	449	449	450	450	450	450			
ANTICIPATED DEPLETIONS											
Agricultural- Irrig. & Stock (rounded)	0	0	90	112	112	112	112	112	112		
NIIP Completion (3)	0.0	0.0	90.0	104.6	104.6	104.6	104.6	104.6			
Fruiland/Hogback Rehabilitation	0.0	0.0	0.0	7.0	7.0	7.0	7.0	7.0			
Ag. Irrig. & Stock Total	0.0	0.0	90.0	111.6	111.6	111.6	111.6	111.6			
Municipal/Domestic (rounded)											
Animas-La Plata:											
SJWC (4)	0.0	1.0	10.4	10.4	10.4	10.4	10.4	10.4	2		1
Navajo	0.0	0.0	0.0	2.0	2.3	2.3	2.3	2.3			
LPCD	0.0	0.0	0.0	0.8	0.8	0.8	0.8	0.8			
Ridges Basin Reservoir Evap	0.0	0.0	0.0	0.1	0.1	0.1	0.1	0.1			
Animas-La Plata Subtotal	0.0	1.0	10.4	13.3	13.6	13.6	13.6	13.6			
Jicarilla (5)	0.0	0.0	0.0	0.8	1.4	1.8	1.8	1.8		2	
Municipal/Domestic Subtotal	0.0	1.0	10.4	14.1	15.0	15.4	15.4	15.4			
Power/Industrial (Jicarilla)	0	0	0	0	0	0	0	0			
Minerals	0	0	0	0	0	0	0	0			
Export	0	0	0	0	0	0	0	0			
Reservoir Evaporation	0	0	0	0	0	0	0	0			
TOTAL ANTICIPATED DEPLETIONS	449	450	549	575	577	577	577	577			
POTENTIAL DEPLETIONS											
Agricultural- Irrig. & Stock	0	0	0	0	0	0	0	0			
Municipal/Domestic (NGP- Navajo)	0	0	0	6	10	11	11	11			
Municipal/Domestic (Navajo)	0	0	0	1	2	3	4	5			
Power/Industrial (rounded)											
Navajo/Gallup - NAPI	0.0	0.0	0.0	0.7	0.7	0.7	0.7	0.7			
Small Navajo Res. Contracts	0.0	0.0	0.1	0.1	0.1	0.1	0.1	0.1			
Power/Industrial Subtotal	0.0	0.0	0.1	0.8	0.8	0.8	0.8	0.8			
Minerals	0	0	0	0	0	0	0	0			
Export - Navajo/Gallup (rounded)	0	0	0	6	9	14	14	14			
Gallup (lease from Jicarilla)	0.0	0.0	0.0	3.5	5.0	7.5	7.5	7.5			
Navajo in NM	0.0	0.0	0.0	2.0	4.0	6.1	6.1	6.1			
Export Subtotal	0.0	0.0	0.0	5.5	9.0	13.6	13.6	13.6	23		84
Reservoir Evaporation	0	0	0	0	0	0	0	0			
TOTAL POTENTIAL DEPLETIONS	0	0	0	14	22	29	30	31			
Summary of Depletions	449	450	549	599	599	606	607	608	344		27
Evap- CRSP Storage Units	58	58	58	58	58	58	58	58			
TOTAL DEPLETIONS	507	508	607	647	657	664	665	666			
State Share of 6.0 MAF (6)	669	669	669	669	669	669	669	669			
Remaining Available (6.7)	162	161	62	22	12	5	4	3			
%rent of State Share	24%	24%	9%	3%	2%	1%	1%	0%			

(1) Does not reflect post-1965 transfers from irrigation to municipal and industrial uses. 800 a-f of current non-indian depletions supplied through short-term leases from Jicarilla as of 2001.
 (2) PNM contract with Secretary expires 2005; PNM subcontract with Jicarilla effective 2006-2027, with commitment to negotiate in 2022 for a subcontract extension.
 (3) Total NIIP depletion by 2020 is 254,000 a-f, assuming 5% average fallow acreage.
 (4) SJWC member entities in 2000 used direct flow of Animas River under ALP permits.
 (5) Jicarilla may use 1,200 a-f through Navajo/Gallup Project on south part of reservation.
 (6) Does not include salvage by use.
 (7) Reserved for settlements.
 NOTE: This is a schedule of anticipated depletions for planning purposes only. It is not a tabulation or determination of water rights.

OSE3015CON

*Amended Privately
Log
Document # 34*



CONFIDENTIAL

Page 17 of form dated 7/23/2010

Item	Year							
	1991-95	2000	2010	2020	2030	2040	2050	2060+
CURRENT DEPLETIONS								
Agricultural-Irrig. & Stock	246	246	246	246	246	246	246	246
Municipal/Domestic	10	10	10	10	10	10	10	10
Power/Industrial	56	56	56	57	58	58	58	58
Minerals	0	0	0	0	0	0	0	0
Export	108	108	108	108	108	108	108	108
Reservoir Evaporation	29	29	29	28	28	28	28	28
TOTAL CURRENT DEPLETIONS	449	449	449	449	450	450	450	450
ANTICIPATED DEPLETIONS								
Agricultural-Irrig. & Stock	0	0	90	112	112	112	112	112
Municipal/Domestic	0	1	10	14	15	15	15	15
Power/Industrial	0	0	0	0	0	0	0	0
Minerals	0	0	0	0	0	0	0	0
Export	0	0	0	0	0	0	0	0
Reservoir Evaporation	0	0	0	0	0	0	0	0
TOTAL ANTICIPATED DEPLETIONS	0	1	100	126	127	127	127	127
POTENTIAL DEPLETIONS								
Agricultural-Irrig. & Stock	0	0	0	0	0	0	0	0
Municipal/Domestic	0	0	0	7	12	14	15	16
Power/Industrial	0	0	1	1	1	1	1	1
Minerals	0	0	0	0	0	0	0	0
Export	0	0	0	6	9	14	14	14
Reservoir Evaporation	0	0	0	0	0	0	0	0
TOTAL POTENTIAL DEPLETIONS	0	0	1	14	22	29	30	31
Summary of Depletions	449	450	550	589	599	606	607	608
Evap-Storage Units	58	58	58	58	58	58	58	58
TOTAL DEPLETIONS	507	508	608	647	657	664	665	666
State Share of 6.0 MAF	669	669	669	669	669	669	669	669
Remaining Available	162	161	61	22	12	5	4	3
Percent of State Share	24%	24%	9%	3%	2%	1%	1%	0%

NOTE: This depletion schedule does not attempt to interpret the Colorado River Compact, the Upper Colorado River Basin Compact, or any other element of the "Law of the River." This schedule should not be construed as an acceptance of any assumption that limits the Upper Colorado River Basin's depletion.

In this schedule, the Upper Division Allocation is listed, for planning purposes only, as 5,950,000 acre-feet. For planning purposes, the total Upper Colorado River Basin Allocation is 6,000,000 acre-feet, of which 50,000 acre-feet is the Upper Basin allocation to Arizona. This estimate does not constitute an endorsement of the Bureau of Reclamation's 1988 Hydrologic Determination.

"Evap-Storage Units" refers to the total and individual States portions of evaporation from the major reservoirs constructed under the Colorado River Storage Project Act. These include Flaming Gorge, Curecanti and Glen Canyon.

*Amended Printz Copy
 Document # 34*

San Juan River Basin in New Mexico Navajo Nation Water Rights Settlement

Use 2060	Amount (TAF)	% of State Share	
Nation	316	51.7	
Navajo Reservoir Evap: Navajo/NHP	28	4.6	
Non-Indian: benefits reservation	39	6.4	62.7
Jicarilla Apache Nation	33	5.4	5.4
Non-Indian: out of basin: Navajo agreed to for NHP	162	16.7	
Non-Indian: in basin	93	15.2	31.9
Total	611	100.0	

added allocations:
Navajo 50/50
Non-Navajo

Amended Printout
Document # 34

Dep. Sched.

Right/Use

Revised

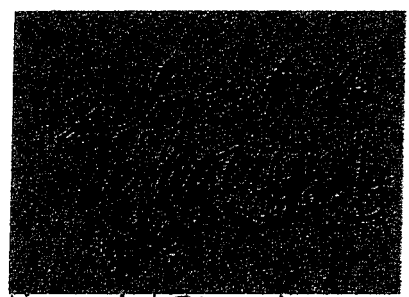
current + anticipated

NIP	254.0	267.0 - 5% follow	254.0
Fruit	7.9	8.0 - 1% follow	7.9
HB w/rehab.	18.0	21.1 - 15% follow	18.0
(rehab. 5.0 → 7.0)		- 5% follow	20.0

(↓ Utah Int. to Animas irrig. ?) 39 → 31 → ^{right to} _{use} 31.7 → 12.2 → '65 to 1990's

(transferred/used by cities since 1990?)

NAPI	1.2	0.7	0.7
NGP (exc. NAPI)		17.1	
		(11.0 in SJ, 6.1 out SJ)	→ 11.0
		3.0	6.1



Tihamilla
Morrison
Navajo Plans, Elroy 27

+ 0 full UI/M&E transfer	+28	UI + AR
+ 11 offstream/gas OR	+24	salvage by use (4%)
	-3	NIP M&E
- 7 earilla	-15	other M&E (99 x .15)
16.2 PRM	-13	NIP full use
7.5 Gallup	-8	separate Gallup contract
6.8 Irrig. Project	-2	Allottees?
limit used. 1.2 NGP	-1	Ute Mtn. Ute? Zuni?
	-1	Hack full use
	+9	

Imputed Privilege Log
Document # 34
32 to - 4

OSE3018CON

VOL TO Y Q15LY1DUK10W *11/21/78*
NEW MEXICO'S UPPER COLORADO RIVER APPORTIONMENT

Uses per 1965 Comprehensive Framework Study Excepting Projects and Uses not then fully developed.

1991 BASELINE

DISAGGREGATED 1991 BASELINE

	1000 AF			1000 AF
		IRRIGATION		
	23.3	Hogback		12.1
	6.4	Hogback to NIIP		6.4
	1	Cuedi		0.9
	1	Fruitland		7.9
	1	Chaco Indian		3.1
	1	Whiskey Creek Indian		0.3
Subtotal	<u>29.7</u>	-----		<u>30.7</u>
	1	Above Navajo Dam		1.3
	1	Animas		31.1
	1	La Plata		5.1
	1	Westwater		0.1
	1	Chaco-Non Indian		0.7
Subtotal	<u>38.3</u>	-----		<u>38.9</u>
	15.0	Upper San Juan		8.2
	8.0	Farmers Mutual		8.7
	2.0	Jewett		2.8
Subtotal	<u>25.0</u>	-----		<u>19.7</u>
	<u>93.0</u>	Total Irrigation		<u>89.3</u>
		MUNICIPAL, INDUSTRIAL & MISC.		
	3.0	Bloomfield Industrial		2.5
	5.0	Municipal And Industrial		8.9
	2	Scattered Rural		1.4
	2	Stock Ponds		4.3
	2	Wildlife		1.4
	<u>8.0</u>	Total Municipal Industrial & Misc.		<u>18.5</u>
	<u>101.0</u>	TOTAL 1965 COMPREHENSIVE FRAMEWORK		<u>107.8</u>

*mc M&I ↑
from 1965-70*

CONFIDENTIAL

¹ Included in Subtotal for this group
² Included in Subtotal of 38.3 for 2nd Subgroup this page

*Amended Privilege Log
Document # 35*

Existing and Authorized Uses

NAVAJO INDIAN RESERVATION PLUS PROPORTIONATE SHARE OF RESERVOIR REGULATION
EVAPORATIVE LOSS

	1000 AF
1965 Framework Hogback & Cuedi (Disaggregated w/o Transfer to NIIP)	19.4
Hogback Extension	10.0
Chaco and Whiskey (Disaggregated)	3.4
Fruitland (Disaggregated)	7.9
NIIP	254.0
ALP	3.8
BPH (Four Corners)	31.0

Navajo yield - 254 + 9.2 + 10 + 110 + 26 + 6.5 + 15

Subtotal	329.5	} 343.9
Proportionate Share:		
Navajo Reservoir (254 ÷ 458.2 x 26)	14.4	
CRSP Reservoir (343.9 ÷ 669 x 58)	29.8	
Subtotal	44.2	

727 ?

TOTAL NAVAJO INDIAN W/O SCATTERED RURAL & STOCKPONDS 373.7

JICARILLA APACHE

1965 Framework (estimate)	0.6
1992 Water Rights Settlement	32.0

Subtotal 32.6

Proportionate Share

Navajo Reservoir (32.0 ÷ 458.2 x 26)	1.8
CRSP Reservoirs (34.4 ÷ 669 x 58)	3.0

Subtotal 4.8

TOTAL JICARILLA W/O MUNICIPAL, INDUSTRIAL, DOMESTIC, RURAL,
STOCKPONDS & WILDLIFE 37.3

 CONFIDENTIAL

*Amended Privilege Log
Document # 35*

OTHER

1965 Comprehensive Framework (Discharge))
San Juan Chama Project
Hammond Project (Discharge))
BPH (lease to PNM)
Navajo Reservoir Contracts (PNM & Small)
ALP

107.8 - 44 - 1 - 2.7 - 0.6
76.5 - see note pg 1
103.5 - 110 - 6.5 for 4 years
9.2
8.0
17.7 = 16.2 + 1.5 minor dep.
30.2 - exc. NW 3.8

Proportionate Share:

Navajo Reservoir $(130.4 \div 458.2 \times 26)$
CRSP Reservoirs $(252.5 \div 699 \times 58)$

$1,245.1 - 103.5 - 8.0$
 669
 $727?$

Subtotal

245.1

7.4

21.9

} 252.5

Subtotal

29.3

TOTAL OTHER INCLUDING ALL M&I, DOMESTIC RURAL, STOCKPONDS & WILDLIFE

274.4

Remaining Reservoir Regulation losses

Navajo Reservoir

2.4

CRSP Reservoir

3.3

Total Remaining Reservoir Losses

5.7

TOTAL OF 1965 COMPREHENSIVE FRAMEWORK AND AUTHORIZED USES

691.2

New Mexico's Upper Colorado River Apportionment

including 14.0 AF/YR Salvage

727.0

Total Existing and Authorized Uses

691.2

Remainder

35.8

USDI Additional for NIIP - 110,630 acres/yr

13.0

Available for Commitment Within 727.0 Apportionment

22.8 ← NGRP

rs\colorado\apport.fnl



CONFIDENTIAL

Amended Privilege Log
Document # 35

New Mexico Depletions - San Juan River Basin


	At site	1000 AF
1965 Comprehensive Framework (disaggregated Projects)		107.8
Hogback Extension		10.0
Hammond		9.2
N11P		254.0
San Juan-Chama		110.0
ALP		34.0
Navajo Reservoir Evap		26.0
Sub-total Projects		443.2

Other

BPH		39.0
Jicarilla Settlement		25.5
Navajo Reservoir Contracts		17.7
Sub total - other		82.2

CRSP Reservoir loss to NM 58.0

NM Upper Colo. River Apportionment including 17.0 AF/YR salvage by use		727.0
Total 1965 + Projects + Other + CRSP Evap		691.7
Remainder		35.8
USDI Additional for N11P - 110,630 AC/YR		13.0

 CONFIDENTIAL Available for commitment within 727.0 / N11P apportionment.

22.8
1955 priority not by Navajo Res. (Secretary of Interior appropriation)

Included Privilege Log
Document # 36

IRRIGATION USES IN THE SAN JUAN RIVER BASIN IN NEW MEXICO

AGRICULTURAL ACRES

DEPLETIONS (acre-feet)

PROJECT OR USE	DECREED OR AUTHORIZED		EXISTING BASELINE	RECENT (1994)	CURRENT (2000)	RESIDENT. ACRES IN BASELINE	DECREED OR AUTHOR.	DEPLETIONS (acre-feet)		
	Decree	Other						EXISTING BASELINE (MODEL)	BASELINE (NM)	CURRENT (MODEL)
INDIAN USES - JICARILLA:										
Dulce & Vicinity	1,533	---	1,944	15	15	0	1,731	2,195	0	17
INDIAN USES - NAVAJO:										
San Juan River:										
NIIP	---	110,630	110,630	46,749	45,635	0	267,000	280,600	254,000	135,330
Fruitland-Cambridge	---	3,675	3,300	2,295	2,084	100	---	7,898	7,900	6,147
Hogback, inc. Extensior	---	6,655	6,165	3,086	2,889	100	---	12,100	12,100	9,535
Cudei	---	670	400	336	313	0	---	900	900	715
Subtotal - San Juan R	---	121,630	119,530	52,466	50,921	200	---	301,498	274,900	151,727
Chaco River Basin	---	6,400	3,300	384	306	0	---	4,608	3,100	4,608
Crystal Area	---	480	300	100	100	0	---	649	300	649
Other	---	120	0	0	0	0	---	0	0	0
Total - Navajo	---	128,630	123,130	52,950	51,327	200	---	306,755	278,300	156,984
NON-INDIAN USES:										
Above Navajo Dam:										
Pine River & Vicinity	1,770	1,640	900	574	144	0	---	733	1,300	925
San Juan River:										
Upper San Juan River	6,539	7,020	3,500	2,502	2,798	300	---	9,137	8,200	6,680
Hammond Project	---	3,933	3,933	2,609	3,278	0	---	10,268	9,200	7,507
Farmers Mutual Ditch	4,182	4,350	3,750	2,531	2,169	600	---	9,559	8,700	7,462
Jewett Valley	1,269	1,269	1,200	942	775	100	---	3,088	2,800	2,379
Westwater	---	63	50	46	62	0	---	110	100	110
Subtotal - San Juan R	11,990	16,635	12,433	8,630	9,082	1,000	---	32,162	29,000	24,138
Animas River	17,437	16,700	15,600	6,008	4,978	4,500	---	36,725	31,700	24,873
La Plata River	5,888	5,888	4,500	3,328	2,667	0	---	9,639	5,100	8,276
Chaco River Basin	1,100	360	900	0	0	0	---	0	700	0
Total - Non-Indian	38,185	41,223	34,333	18,540	16,871	5,500	---	79,259	67,800	58,212
TOTAL	39,718	169,853	159,407	71,505	68,213	5,700	---	388,209	346,100	215,213

Notes:

Navajo Uses: The Act of June 13, 1962, authorizes a project acreage of 110,630 acres for NIIP. The Act also provides that a contract with the Secretary of the Interior for water from the Navajo Reservoir supply shall not be required to meet the water requirements of the Fruitland, Cambridge, Hogback and Cudei irrigation projects, nor the water required in connection with the extension of the irrigated acreages of the Fruitland and Hogback irrigation projects in a total amount of approximately 11,000 acres (water to irrigate a project acreage in excess of 11,000 acres total in these projects requires such contract with shortage-sharing provisions with other contractors).

Non-Indian Uses: Decreed acres exclude acres licensed after 1948 and do not reflect transfers to non-irrigation uses and abandoned acres (ie, 2,940 acres total of private rights licensed between 1948 and 1975, 400 acres total transferred by 1975 due to Farmington expansion). Baseline acres and model depletions include agricultural and residential irrigation depletions from ditches.

*Amended Privilege Log
Document # 38*



CONFIDENTIAL

DEPLETIONS IN THE SAN JUAN RIVER BASIN IN NEW MEXICO
(Units: acre-feet)

PROJECT OR USE	AUTHORIZED		BASELINE		DEPLETION SCHEDULE		CURRENT (MODEL)
	ORIGINAL	ADJ. FOR MOD. B-C	EXISTING MODEL	NEW MEXICO	2000	2060	
INDIAN USES - JICARILLA:							
Irrigation	1,731	1,731	2,195	---	---	---	17
Stockpond and stock	1,589	1,589	---	---	---	---	---
Recreation/F&W	717	717	---	---	---	---	---
Domestic, M&I, misc.	348	348	---	---	---	---	---
San Juan-Chama	6,500	6,500	6,500	6,500	6,500	6,500	6,500
Navajo Reservoir	25,500	25,500	17,130	16,200	16,200	25,500	17,130
Total - Jicarilla	36,385	36,385	25,825	22,700	22,700	32,000	23,647
INDIAN USES - NAVAJO:							
Irrigation - NIIP	267,000	270,000	280,600	254,000	149,400	254,000	135,330
Irrigation - San Juan R.	25,800	29,700	20,898	20,900	20,900	25,900	16,397
Irrigation - Tributary	6,100	7,000	5,257	3,400	3,400	3,400	5,257
Stockpond and stock	---	---	---	---	---	---	---
Recreation/F&W	---	---	---	---	---	---	---
Domestic, M&I, misc.	---	---	---	---	---	---	---
Commercial	450	450	450	450	450	450	450
Animas-La Plata	2,360	2,360	2,340	2,340	0	2,360	0
Navajo-Gallup	20,784	20,784	0	0	0	20,784	0
Total - Navajo	322,494	330,294	309,545	281,090	174,150	306,894	157,434
NON-INDIAN USES:							
Irrigation - Above Navajo	2,300	2,600	733	1,300	1,300	1,700	925
Irrigation - San Juan R.	38,800	44,600	32,162	29,000	29,000	29,000	24,138
Irrigation - Tributary	41,200	47,400	46,364	37,500	37,500	37,500	33,149
Stockpond and stock	4,300	4,300	2,200	2,200	4,300	4,300	2,200
Recreation/F&W	1,400	1,400	1,400	1,400	1,400	1,400	1,400
Domestic (scattered)	1,400	1,400	1,400	1,400	1,400	1,600	1,400
M&I and commercial	8,900	8,900	8,963	8,900	8,900	8,900	6,945
Bloomfield industrial	2,500	2,500	2,500	2,500	2,500	2,500	2,500
Utah International	39,000	39,000	39,000	39,000	37,000	39,000	31,388
San Juan-Chama	103,500	103,500	101,000	101,500	101,500	101,500	101,514
Animas-La Plata	11,300	11,300	12,000	12,000	0	11,250	0
Navajo-Gallup	7,500	7,500	0	0	0	7,500	0
Navajo Res. evap	28,000	28,000	27,037	28,000	28,300	27,000	29,139
FWS Minor Depletions	110	110	4,050	110	110	110	4,050
Total - Non-Indian	290,210	302,510	278,809	264,810	253,210	273,260	238,748
TOTAL: Use in NM	649,089	669,189	614,179	568,600	450,060	612,154	419,829

- 2%
18,784

610,154

Notes:

Jicarilla Uses: Depletions for irrigation, stock, recreation and domestic uses included in non-Indian amounts for these categories. Navajo Reservoir uses include 16,200 a-f subcontract with PNM for San Juan Power Plant, 930 a-f total in five subcontracts for minor non-Indian uses (included in non-Indian baseline depletions), and potentially 8,700 a-f for Navajo-Gallup (inc. 1,200 a-f for Jicarilla use and 7,500 a-f subcontract for non-Indian use). Authorized depletions for all Jicarilla uses are decreed.

Navajo Uses: Depletions for stock, recreation and domestic uses included in non-Indian amounts for these categories. Commercial depletions include NAPI fry factory. Authorized depletions for irrigation uses, Animas-La Plata (inc. share of reservoir evap) and Navajo-Gallup (NM portion only) estimated.

Non-Indian Uses: Stock uses total 4,300 a-f at site of use and deplete San Juan River by 2,200 a-f. Authorized depletions for irrigation uses, Animas-La Plata (inc. share of reservoir evap), Navajo-Gallup and Navajo Reservoir evap estimated. Authorized depletions for stock, recreation, domestic and M&I uses include Indian uses and are assumed equal to scheduled 2000 depletions, as are Bloomfield industrial depletions. Fish and Wildlife depletions include small lake evaporation.

Amended Privilege Log Document # 38

New Mexico apportionment under the Upper Colorado River Basin Compact (1000 a-f):

NM share of:	Basin Yield	Salvage by Use	Apportion.	CRSP evap	Use in NM
6.0 MAF Upper Basin	669	12	681	58	623
6.3 MAF Upper Basin	714	13	727	58	669

Page 20 of Fax dated 7/23/01



CONFIDENTIAL

NEW MEXICO ANTICIPATED DEPLETION SCHEDULE

Proposed July 17, 2001

hold

Year	1990	2000	2010	2020	2030	2040	2050	2060
CURRENT DEPLETIONS (1)								
Agricultural- Irrig. & Stock (rounded)	246	246	246	246	246	246	246	246
Navajo Irrigation:								
NIIP	149.4	149.4	149.4	149.4	149.4	149.4	149.4	149.4
Fruitland-Cambridge	7.9	7.9	7.9	7.9	7.9	7.9	7.9	7.9
Shiprock-Cudei	13.0	13.0	13.0	13.0	13.0	13.0	13.0	13.0
Chaco River	3.1	3.1	3.1	3.1	3.1	3.1	3.1	3.1
Crystal	0.3	0.3	0.3	0.3	0.3	0.3	0.3	0.3
Navajo Irrigation Subtotal	173.7	173.7	173.7	173.7	173.7	173.7	173.7	173.7
Non-Indian Irrigation:								
Above Navajo Dam (inc. Jicarilla)	1.3	1.3	1.3	1.3	1.7	1.7	1.7	1.7
Upper San Juan	8.2	8.2	8.2	8.2	8.2	8.2	8.2	8.2
Hammond	9.2	9.2	9.2	9.2	9.2	9.2	9.2	9.2
Animas	31.7	31.7	31.7	31.7	31.7	31.7	31.7	31.7
La Plata	5.1	5.1	5.1	5.1	5.1	5.1	5.1	5.1
Farmers Mutual Ditch	8.7	8.7	8.7	8.7	8.7	8.7	8.7	8.7
Westwater	0.1	0.1	0.1	0.1	0.1	0.1	0.1	0.1
Jewett Valley	2.8	2.8	2.8	2.8	2.8	2.8	2.8	2.8
Chaco River	0.7	0.7	0.7	0.7	0.7	0.7	0.7	0.7
Non-Indian Irrigation Subtotal	67.8	67.8	67.8	67.8	68.2	68.2	68.2	68.2
Stockpond Evap and Stock	4.3	4.3	4.3	4.3	4.3	4.3	4.3	4.3
Ag.- Irrig. & Stock Total	245.8	245.8	245.8	245.8	246.2	246.2	246.2	246.2
Municipal/Domestic (rounded)	10	10	10	10	10	10	10	10
Municipal and Industrial	8.9	8.9	8.9	8.9	8.9	8.9	8.9	8.9
Scattered Rural Dom. (inc. Jicarilla)	1.4	1.4	1.4	1.4	1.5	1.5	1.6	1.6
Municipal/Domestic Total	10.3	10.3	10.3	10.3	10.4	10.4	10.5	10.5
Power/Industrial (rounded)	56	56	56	57	58	58	58	58
PNM (lease from Jicarilla after 2005)	16.2	16.2	16.2	16.2	16.2	16.2	16.2	16.2
Utah International (inc. lease to PNM)	37.0	37.0	37.0	38.0	39.0	39.0	39.0	39.0
Bloomfield Industrial	2.5	2.5	2.5	2.5	2.5	2.5	2.5	2.5
Power/Industrial Total	55.7	55.7	55.7	56.7	57.7	57.7	57.7	57.7
Minerals	0	0	0	0	0	0	0	0
Export - San Juan-Chama Project	108	108	108	108	108	108	108	108
Reservoir Evaporation (rounded)	29	29	29	28	28	28	28	28
Navajo Reservoir Evap	28.3	28.3	27.5	27.0	27.0	27.0	27.0	27.0
Small Reservoir Evap	1.2	1.2	1.2	1.2	1.2	1.2	1.2	1.2
Reservoir Evaporation Total	29.5	29.5	28.7	28.2	28.2	28.2	28.2	28.2
TOTAL CURRENT DEPLETIONS	449	449	449	449	450	450	450	450
ANTICIPATED DEPLETIONS								
Agricultural- Irrig. & Stock (rounded)	0	0	91	120	115	110	110	110
NIIP Completion (2)	0.0	0.0	80.0	104.6	104.6	104.6	104.6	104.6
NIIP Groundwater Buildup- new land	0.0	0.0	10.6	10.6	5.0	0.0	0.0	0.0
Fruitland/Hogback Restoration	0.0	0.0	0.0	5.0	5.0	5.0	5.0	5.0
Ag.- Irrig. & Stock Total	0.0	0.0	90.6	120.2	114.6	109.6	109.6	109.6
Municipal/Domestic (rounded)	0	0	5	14	20	23	23	23
Animas-La Plata:								
SJWC	0.0	0.0	5.0	7.0	10.4	10.4	10.4	10.4
Navajo	0.0	0.0	0.0	2.0	2.3	2.3	2.3	2.3
LPCD	0.0	0.0	0.0	0.8	0.8	0.8	0.8	0.8
Ridges Basin Reservoir Evap	0.0	0.0	0.0	0.1	0.1	0.1	0.1	0.1
Animas-La Plata Subtotal	0.0	0.0	5.0	9.9	13.6	13.6	13.6	13.6
Jicarilla (3)	0.0	0.0	0.0	4.3	6.4	9.3	9.3	9.3
Municipal/Domestic Subtotal	0.0	0.0	5.0	14.2	20.0	22.9	22.9	22.9
Power/Industrial (Jicarilla)	0	0	0	0	0	0	0	0
Minerals	0	0	0	0	0	0	0	0
Export	0	0	0	0	0	0	0	0
Reservoir Evaporation	0	0	0	0	0	0	0	0
TOTAL ANTICIPATED DEPLETIONS	449	449	545	583	585	583	583	583
POTENTIAL DEPLETIONS								
Agricultural- Irrig. & Stock	0	0	0	0	0	0	0	0
Municipal/Domestic (NGP- Navajo)	0	0	0	6	10	12	12	12
Power/Industrial (rounded)	0	1	1	1	1	1	1	1
Navajo/Gallup - NAPI	0.0	0.0	0.0	0.7	0.7	0.7	0.7	0.7
Navajo Fry Factory	0.0	0.5	0.5	0.5	0.5	0.5	0.5	0.5
Small Navajo Res. Contracts	0.1	0.1	0.1	0.1	0.1	0.1	0.1	0.1
Power/Industrial Subtotal	0.1	0.6	0.6	1.3	1.3	1.3	1.3	1.3
Minerals	0	0	0	0	0	0	0	0
Export - Navajo/Gallup (rounded)	0	0	0	6	11	15	15	15
Gallup	0.0	0.0	0.0	3.5	5.0	7.5	7.5	7.5
Navajo in NM	0.0	0.0	0.0	2.0	6.0	7.6	7.6	7.6
Export Subtotal	0.0	0.0	0.0	5.5	11.0	15.1	15.1	15.1
Reservoir Evaporation	0	0	0	0	0	0	0	0
TOTAL POTENTIAL DEPLETIONS	0	1	1	13	22	28	28	28
Summary of Depletions	449	450	546	596	607	611	611	611
Evap- CRSP Storage Units	58	58	58	58	58	58	58	58
TOTAL DEPLETIONS	507	508	604	654	665	669	669	669
State Share of 6.0 MAF (4)	669	669	669	669	669	669	669	669
Remaining Available (4)	162	161	65	15	4	0	0	0
Percent of State Share	24%	24%	10%	2%	1%	0%	0%	0%

(1) Does not reflect post-1965 transfers from irrigation to municipal and industrial uses. 930 a-f of current non-indian depletions supplied through short-term leases from Jicarilla as of 2001.
 (2) Total NIIP depletion by 2020 is 254,000 a-f.
 (3) Jicarilla may use 8,700 a-f of total through Navajo/Gallup Project (7,500 a-f lease to Gallup; 1,200 a-f use on south part of reservation)
 (4) Does not include salvage by use.

OSE3025CON

*Amended
 Privileged Log
 Document # 38*

Page 23 of fax dated 7/23/10



CONFIDENTIAL

NEW MEXICO ANTICIPATED DEPLETION SCHEDULE

Proposed July 17, 2001

Year	1990	2000	2010	2020	2030	2040	2050	2060
CURRENT DEPLETIONS (1)								
Agricultural- Irrig. & Stock (rounded)	246	246	246	246	246	246	246	246
Navajo Irrigation:								
NIIP	149.4	149.4	149.4	149.4	149.4	149.4	149.4	149.4
Fruitland-Cambridge	7.9	7.9	7.9	7.9	7.9	7.9	7.9	7.9
Shiprock-Cudei	13.0	13.0	13.0	13.0	13.0	13.0	13.0	13.0
Chaco River	3.1	3.1	3.1	3.1	3.1	3.1	3.1	3.1
Crystal	0.3	0.3	0.3	0.3	0.3	0.3	0.3	0.3
Navajo Irrigation Subtotal	173.7	173.7	173.7	173.7	173.7	173.7	173.7	173.7
Non-Indian Irrigation:								
Above Navajo Dam (inc. Jicarilla)	1.3	1.3	1.3	1.3	1.7	1.7	1.7	1.7
Upper San Juan	8.2	8.2	8.2	8.2	8.2	8.2	8.2	8.2
Hammond	9.2	9.2	9.2	9.2	9.2	9.2	9.2	9.2
Animas	31.7	31.7	31.7	31.7	31.7	31.7	31.7	31.7
La Plata	5.1	5.1	5.1	5.1	5.1	5.1	5.1	5.1
Farmers Mutual Ditch	8.7	8.7	8.7	8.7	8.7	8.7	8.7	8.7
Westwater	0.1	0.1	0.1	0.1	0.1	0.1	0.1	0.1
Jewett Valley	2.8	2.8	2.8	2.8	2.8	2.8	2.8	2.8
Chaco River	0.7	0.7	0.7	0.7	0.7	0.7	0.7	0.7
Non-Indian Irrigation Subtotal	67.8	67.8	67.8	67.8	68.2	68.2	68.2	68.2
Stockpond Evap and Stock	4.3	4.3	4.3	4.3	4.3	4.3	4.3	4.3
Ag. - Irrig. & Stock Total	245.8	245.8	245.8	245.8	246.2	246.2	246.2	246.2
Municipal/Domestic (rounded)								
Municipal and Industrial	8.9	8.9	8.9	8.9	8.9	8.9	8.9	8.9
Scattered Rural Dom. (inc. Jicarilla)	1.4	1.4	1.4	1.4	1.5	1.5	1.6	1.6
Municipal/Domestic Total	10.3	10.3	10.3	10.3	10.4	10.4	10.5	10.5
Power/Industrial (rounded)								
PNM (lease from Jicarilla after 2005)	16.2	16.2	16.2	16.2	16.2	16.2	16.2	16.2
Utah International (inc. lease to PNM)	37.0	37.0	37.0	38.0	39.0	39.0	39.0	39.0
Bloomfield Industrial	2.5	2.5	2.5	2.5	2.5	2.5	2.5	2.5
Power/Industrial Total	55.7	55.7	55.7	56.7	57.7	57.7	57.7	57.7
Minerals								
Export - San Juan-Chama Project	108	108	108	108	108	108	108	108
Reservoir Evaporation (rounded)	29	29	29	28	28	28	28	28
Navajo Reservoir Evap								
Small Reservoir Evap	1.2	1.2	1.2	1.2	1.2	1.2	1.2	1.2
Reservoir Evaporation Total	29.5	29.5	28.7	28.2	28.2	28.2	28.2	28.2
TOTAL CURRENT DEPLETIONS	449	449	449	449	450	450	450	450
ANTICIPATED DEPLETIONS								
Agricultural- Irrig. & Stock (rounded)	0	0	91	120	115	110	110	110
NIIP Completion (2)								
NIIP Groundwater Buildup- new land	0.0	0.0	80.0	104.6	104.6	104.6	104.6	104.6
Fruitland/Hogback Restoration	0.0	0.0	0.0	5.0	5.0	5.0	5.0	5.0
Ag. - Irrig. & Stock Total	0.0	0.0	80.0	109.6	109.6	109.6	109.6	109.6
Municipal/Domestic (rounded)								
Animas-La Plata:								
SJWC	0.0	0.0	5.0	7.0	10.4	10.4	10.4	10.4
Navajo	0.0	0.0	0.0	2.0	2.3	2.3	2.3	2.3
LPCD	0.0	0.0	0.0	0.8	0.8	0.8	0.8	0.8
Ridges Basin Reservoir Evap	0.0	0.0	0.0	0.1	0.1	0.1	0.1	0.1
Animas-La Plata Subtotal	0.0	0.0	5.0	9.9	13.6	13.6	13.6	13.6
Jicarilla (3)	0.0	0.0	0.0	0.8	1.4	1.8	1.8	1.8
Municipal/Domestic Subtotal	0.0	0.0	5.0	10.7	15.0	15.4	15.4	15.4
Power/Industrial (Jicarilla)								
Minerals	0	0	0	0	0	0	0	0
Export	0	0	0	0	0	0	0	0
Reservoir Evaporation	0	0	0	0	0	0	0	0
TOTAL ANTICIPATED DEPLETIONS	449	449	545	580	580	575	575	575
POTENTIAL DEPLETIONS								
Agricultural- Irrig. & Stock	0	0	0	0	0	0	0	0
Municipal/Domestic (NGP- Navajo)	0	0	0	6	10	12	12	12
Power/Industrial (rounded)								
Navajo/Gallup - NAPI	0.0	0.0	0.0	0.7	0.7	0.7	0.7	0.7
Navajo Fry Factory	0.0	0.5	0.5	0.5	0.5	0.5	0.5	0.5
Small Navajo Res. Contracts	0.1	0.1	0.1	0.1	0.1	0.1	0.1	0.1
Power/Industrial Subtotal	0.1	0.6	0.6	1.3	1.3	1.3	1.3	1.3
Minerals								
Export - Navajo/Gallup (rounded)	0	0	0	6	11	15	15	15
Gallup (lease from Jicarilla)								
Navajo in NM	0.0	0.0	0.0	3.5	5.0	7.5	7.5	7.5
Export Subtotal	0.0	0.0	0.0	5.5	11.0	15.1	15.1	15.1
Reservoir Evaporation	0	0	0	0	0	0	0	0
TOTAL POTENTIAL DEPLETIONS	0	1	1	13	22	28	28	28
Summary of Depletions	449	450	546	593	602	603	603	603
Evap- CRSP Storage Units	58	58	58	58	58	58	58	58
TOTAL DEPLETIONS	507	508	604	651	660	661	661	661
State Share of 6.0 MAF (4)	669	669	669	669	669	669	669	669
Remaining Available (4)	162	161	65	18	9	8	8	8
Percent of State Share	24%	24%	10%	3%	1%	1%	1%	1%

Handwritten notes:
 - 11/11/2001
 - further lease - 2000
 - rights back to 2040
 - demand - how justifying
 - STWC part 2040 down
 - 7/10/01

Large handwritten signature:
 Amended Priority
 Leg Document
 # 38

Page 22 of form dated 7/23/10



CONFIDENTIAL

OSE3026CON

IRRIGATION USES IN THE SAN JUAN RIVER BASIN IN NEW MEXICO

AGRICULTURAL ACRES

DEPLETIONS (1000 acre-feet)

PROJECT OR USE	DECREED OR AUTHORIZED		EXISTING BASELINE	RECENT (1994)	CURRENT (2000)	RESIDENT. ACRES IN BASELINE	DECREED OR AUTHOR.	EXISTING BASELINE (MODEL)	BASELINE (NM)	CURRENT (MODEL)
	Decree	Other								
INDIAN USES - JICARILLA:										
Dulce & Vicinity	1533	---	1944	15	15	0	1731	2195	0	17
INDIAN USES - NAVAJO:										
San Juan River:										
NIIP	---	110630	110630	46749	45635	0	267000	280600	254000	135330
Fruitland-Cambridge	---	3675	3300	2295	2084	100	---	7898	7900	6147
Hogback, inc. Extensior	---	6460	5200	3086	2889	100	---	12100	12100	9535
Cudei	---	670	400	336	313	0	---	900	900	715
Subtotal - San Juan R	---	121435	119530	52466	50921	200	---	301498	274900	151727
Chaco River Basin	---	6400	3300	384	306	0	---	4608	3100	4608
Crystal Area	---	480	300	100	100	0	---	649	300	649
Other	---	120	0	0	0	0	---	0	0	0
Total - Navajo	---	128435	123130	52950	51327	200	---	306755	278300	156984
NON-INDIAN USES:										
Above Navajo Dam:										
Pine River & Vicinity	1770	1640	900	574	144	0	---	733	1300	925
San Juan River:										
Upper San Juan River	6539	7020	3500	2502	2798	300	---	9137	8200	6680
Hammond Project	3933	3933	3933	2609	3278	0	---	10268	9200	7507
Farmers Mutual Ditch	4182	4350	3750	2531	2169	600	---	9559	8700	7462
Jewett Valley	1269	1269	1200	942	775	100	---	3088	2800	2379
Westwater	0	63	50	46	62	0	---	110	100	110
Subtotal - San Juan R	15923	16635	12433	8630	9082	1000	---	32162	29000	24138
Animas River	17437	16700	15600	6008	4978	4500	---	36725	31700	24873
La Plata River	5888	5888	4500	3328	2667	0	---	9639	5100	8276
Chaco River Basin	1100	360	900	0	0	0	---	0	700	0
Total - Non-Indian	42118	41223	34333	18540	16871	5500	---	79259	67800	58212
TOTAL	43651	169658	159407	71505	68213	5700	---	388209	346100	215213

Notes:

Navajo Uses: The Act of June 13, 1962, authorizes a project acreage of 110,630 acres for the NIIP and refers to 11,000 acres total for the Fruitland, Cambridge, Hogback and Cudei projects, including project extensions. Other sources of data on authorized project acres are:

- SOI 1948, acres under ditch/ultimate acres: Fruitland 3,275/3,675 acres; Hogback 4,832/11,500 acres; Cudai 600/800 acres; Chaco River Projects 6,605/9,444 acres; Crystal 408/600 acres; Other 322/500 acres
- BIA 1968, total project acres: Fruitland-Cambridge 3,550 acres; Cudei-Hogback 7,380 acres; Chaco River projects 6,490 acres; Crystal 480 acres; Other 122 acres
- USBR 1968, total project acres: Indian lands on San Juan River near Shiprock 11,000 acres; Chaco River Projects 6,500 acres; Whiskey-Coyote (Crystal) 500 acres
- SCS 1986, original project acres: Fruitland 3,675 acres; Hogback 6,460 acres (1,960 abandoned); Cudai 670 acres (200 abandoned)
- BIA 1993 Crop Utilization Data, total irrigable/project acres: Fruitland 3,335/3,830 acres; Hogback 8,286/9,223 acres; Cudei 543/627 acres
- KBE 2000, full right allocated acres: Fruitland-Misc. 6957 acres; Hogback-Cudei 9130 acres

Non-Indian Uses: Decreed acres exclude acres licensed after 1948 and do not reflect transfers to non-irrigation uses and abandoned acres (Mutz: 2,940 acres total licensed between 1948 and 1975, 400 acres total transferred by 1975 due to Farmington expansion)
 Baseline acres and model depletions include agricultural and residential irrigation depletions from ditches.

26169 above 11,000 with contract for Navajo Basin with your 26169



Amended Privilege Log Document # 38

IRRIGATION USES IN THE SAN JUAN RIVER BASIN IN NEW MEXICO

July 17, 2001, draft

PROJECT OR USE	AGRICULTURAL ACRES					DEPLETIONS (acre-feet)				
	DECREED OR AUTHORIZED		EXISTING BASELINE	RECENT (1994)	CURRENT (2000)	RESIDENT. ACRES IN BASELINE	DECREED OR AUTHOR.	EXISTING BASELINE (MODEL)	BASELINE (NM)	CURRENT (MODEL)
	Decree	Other								
INDIAN USES - JICARILLA:										
Dulce & Vicinity	1,533	---	1,944	15	15	0	1,731	2,195	0	17
INDIAN USES - NAVAJO:										
San Juan River:										
NIP	---	110,630	110,630	46,749	45,635	0	267,000	280,600	254,000	135,330
Fruitland-Cambridge	---	3,675	3,300	2,295	2,084	100	---	7,898	7,900	6,147
Hogback, inc. Extensior	---	6,655	5,200	3,086	2,889	100	---	12,100	12,100	9,535
Cudei	---	670	400	336	313	0	---	900	900	715
Subtotal - San Juan R	---	121,630	119,530	52,466	50,921	200	---	301,498	274,900	151,727
Chaco River Basin	---	6,400	3,300	384	306	0	---	4,608	3,100	4,608
Crystal Area	---	480	300	100	100	0	---	649	300	649
Other	---	120	0	0	0	0	---	0	0	0
Total - Navajo	---	128,630	123,130	52,950	51,327	200	---	306,755	278,300	156,984
NON-INDIAN USES:										
Above Navajo Dam:										
Pine River & Vicinity	1,770	1,640	900	574	144	0	---	733	1,300	925
San Juan River:										
Upper San Juan River	6,539	7,020	3,500	2,502	2,798	300	---	9,137	8,200	6,680
Hammond Project	---	3,933	3,933	2,609	3,278	0	---	10,268	9,200	7,507
Farmers Mutual Ditch	4,182	4,350	3,750	2,531	2,169	600	---	9,559	8,700	7,462
Jewett Valley	1,269	1,269	1,200	942	775	100	---	3,088	2,800	2,379
Westwater	---	63	50	46	62	0	---	110	100	110
Subtotal - San Juan R	11,990	16,635	12,433	8,630	9,082	1,000	---	32,162	29,000	24,138
Animas River	17,437	16,700	15,600	6,008	4,978	4,500	---	36,725	31,700	24,873
La Plata River	5,888	5,888	4,500	3,328	2,667	0	---	9,639	5,100	8,276
Chaco River Basin	1,100	360	900	0	0	0	---	0	700	0
Total - Non-Indian	38,185	41,223	34,333	18,540	16,871	5,500	---	79,259	67,800	58,212
TOTAL	39,718	169,853	159,407	71,505	68,213	5,700	---	388,209	346,100	215,213

Notes:

Non-Indian Uses: Decreed acres exclude acres licensed after 1948 and do not reflect transfers to non-irrigation uses and abandoned acres (ie, 2,940 acres total of private rights licensed between 1948 and 1975, 400 acres total transferred by 1975 due to Farmington expansion). Baseline acres and model depletions include agricultural and residential irrigation depletions from ditches.

*Amended Private Log
Document # 38*



CONFIDENTIAL

OSE3028CON

DEPLETIONS IN THE SAN JUAN RIVER BASIN IN NEW MEXICO
(Units: acre-feet)

PROJECT OR USE	AUTHORIZED		BASELINE		DEPLETION SCHEDULE		CURRENT (MODEL)
	ORIGINAL	ADJ. FOR MOD. B-C	EXISTING MODEL	NEW MEXICO	2000	2060	
INDIAN USES - JICARILLA:							
Irrigation	1,731	1,731	2,195	----	----	----	17
Stockpond and stock	1,589	1,589	----	----	----	----	----
Recreation/F&W	717	717	----	----	----	----	----
Domestic, M&I, misc.	348	348	----	----	----	----	----
San Juan-Chama	6,500	6,500	6,500	6,500	6,500	6,500	6,500
Navajo Reservoir	25,500	25,500	17,130	16,200	16,200	25,500	17,130
Total - Jicarilla	36,385	36,385	25,825	22,700	22,700	32,000	23,647
INDIAN USES - NAVAJO:							
Irrigation - NIIP	267,000	270,000	280,600	254,000	149,400	254,000	135,330
Irrigation - San Juan R.	25,800	29,700	20,898	20,900	20,900	25,900	16,397
Irrigation - Tributary	6,100	7,000	5,257	3,400	3,400	3,400	5,257
Stockpond and stock	----	----	----	----	----	----	----
Recreation/F&W	----	----	----	----	----	----	----
Domestic, M&I, misc.	----	----	----	----	----	----	----
Commercial	450	450	450	450	450	450	450
Animas-La Plata	2,360	2,360	2,340	2,340	0	2,360	0
Navajo-Gallup	18,784	18,784	0	0	0	18,784	0
Total - Navajo	320,494	328,294	309,545	281,090	174,150	304,894	157,434
NON-INDIAN USES:							
Irrigation - Above Navajo	2,300	2,600	733	1,300	1,300	1,700	925
Irrigation - San Juan R.	38,800	44,600	32,162	29,000	29,000	29,000	24,138
Irrigation - Tributary	41,200	47,400	46,364	37,500	37,500	37,500	33,149
Stockpond and stock	4,300	4,300	2,200	2,200	4,300	4,300	2,200
Recreation/F&W	1,400	1,400	1,400	1,400	1,400	1,400	1,400
Domestic (scattered)	1,400	1,400	1,400	1,400	1,400	1,600	1,400
M&I and commercial	8,900	8,900	8,963	8,900	8,900	8,900	6,945
Bloomfield industrial	2,500	2,500	2,500	2,500	2,500	2,500	2,500
Utah International	39,000	39,000	39,000	39,000	37,000	39,000	31,388
San Juan-Chama	103,500	103,500	101,000	101,500	101,500	101,500	101,514
Animas-La Plata	11,300	11,300	12,000	12,000	0	11,250	0
Navajo-Gallup	7,500	7,500	0	0	0	7,500	0
Navajo Res. evap	28,000	28,000	27,037	28,000	28,300	27,000	29,139
FWS Minor Depletions	110	110	4,050	110	110	110	4,050
Total - Non-Indian	290,210	302,510	278,809	264,810	253,210	273,260	238,748
TOTAL: Use in NM	647,089	667,189	614,179	568,600	450,060	610,154	419,829

Notes:

Jicarilla Uses: Depletions for irrigation, stock, recreation and domestic uses included in non-Indian amounts for these categories. Navajo Reservoir uses include 16,200 a-f subcontract with PNM for San Juan Power Plant, 930 a-f total in five subcontracts for minor non-Indian uses (included in non-Indian baseline depletions), and potentially 8,700 a-f for Navajo-Gallup (inc. 1,200 a-f for Jicarilla use and 7,500 a-f subcontract for non-Indian use). Authorized depletions for all Jicarilla uses are decreed.

Navajo Uses: Depletions for stock, recreation and domestic uses included in non-Indian amounts for these categories. Commercial depletions include NAPI fry factory. Authorized depletions for irrigation uses, Animas-La Plata (inc. share of reservoir evap) and Navajo-Gallup (NM portion only) estimated.

Non-Indian Uses: Stock uses total 4,300 a-f at site of use and deplete San Juan River by 2,200 a-f. Authorized depletions for irrigation uses, Animas-La Plata (inc. share of reservoir evap), Navajo-Gallup and Navajo Reservoir evap estimated. Authorized depletions for stock, recreation, domestic and M&I uses include Indian uses and are assumed equal to scheduled 2000 depletions, as are Bloomfield industrial depletions. Fish and Wildlife depletions include small lake evaporation.

OSE3029CON

New Mexico apportionment under the Upper Colorado River Basin Compact (1000 a-f):

NM share of:	Basin Yield	Salvage by Use	Apportion.	CRSP evap	Use in NM
6.0 MAF Upper Basin	669	12	681	58	623
6.3 MAF Upper Basin	714	13	727	58	669

Amended Prioritization Log
Document # 38

Page 21 of fax dated 7/23/10



CONFIDENTIAL